

Datasheet for ABIN5583705

**anti-MPV17L antibody**[Go to Product page](#)**1** Image

## Overview

Quantity:	100 µL
Target:	MPV17L
Reactivity:	Human
Host:	Rabbit
Clonality:	Polyclonal
Conjugate:	This MPV17L antibody is un-conjugated
Application:	Immunohistochemistry (Paraffin-embedded Sections) (IHC (p))

## Product Details

Purpose:	Rabbit polyclonal antibody raised against recombinant MPV17L.
Immunogen:	Recombinant protein corresponding to amino acids of human MPV17L.
Sequence:	SQQSGDGTFK SAFTILYTKG TSATEGYPKK
Isotype:	IgG
Cross-Reactivity:	Human

## Target Details

Target:	MPV17L
Alternative Name:	MPV17L ( <a href="#">MPV17L Products</a> )
Background:	Full Gene Name: MPV17 mitochondrial membrane protein-like Synonyms: FLJ39599,MGC70356,MLPH1,MLPH2

## Target Details

Gene ID:	255027
Pathways:	<a href="#">Sensory Perception of Sound</a>

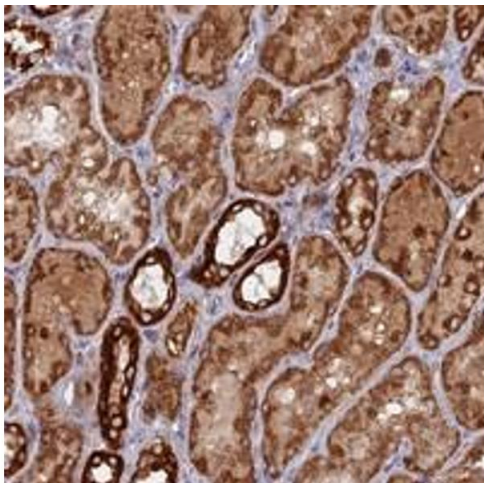
## Application Details

Application Notes:	Immunohistochemistry (1:10-1:20) The optimal working dilution should be determined by the end user.
Restrictions:	For Research Use only

## Handling

Format:	Liquid
Buffer:	In PBS, pH 7.2 (40 % glycerol, 0.02 % sodium azide)
Preservative:	Sodium azide
Precaution of Use:	This product contains Sodium azide: a POISONOUS AND HAZARDOUS SUBSTANCE which should be handled by trained staff only.
Storage:	4 °C,-20 °C
Storage Comment:	Store at 4°C. For long term storage store at -20°C. Aliquot to avoid repeated freezing and thawing.

## Images



### Immunohistochemistry

**Image 1.** Immunohistochemical staining of human kidney with MPV17L polyclonal antibody shows strong cytoplasmic positivity in tubular cells.