

Datasheet for ABIN5583706

**anti-MPZ antibody****1** Image[Go to Product page](#)

## Overview

Quantity:	200 µg
Target:	MPZ
Reactivity:	Human, Mouse
Host:	Chicken
Clonality:	Polyclonal
Conjugate:	This MPZ antibody is un-conjugated
Application:	Immunohistochemistry (IHC), Immunocytochemistry (ICC)

## Product Details

Purpose:	Chicken polyclonal antibody raised against recombinant Human MPZ.
Immunogen:	Two different KLH-conjugated synthetic peptides corresponding to different regions of the MPZ gene product, between the human (NP_000521, NCBI) and mouse (NP_032649, NCBI) sequences.
Isotype:	IgY
Cross-Reactivity:	Human, Mouse
Characteristics:	Immunocytochemistry

## Target Details

Target:	MPZ
Alternative Name:	MPZ ( <a href="#">MPZ Products</a> )

## Target Details

Background:	Full Gene Name: myelin protein zero Synonyms: CHM,CMT1,CMT1B,CMT2I,CMT2J,CMT4E,CMTDI3,DSS,HMSNIB,MPP,P0
Gene ID:	4359, 17528

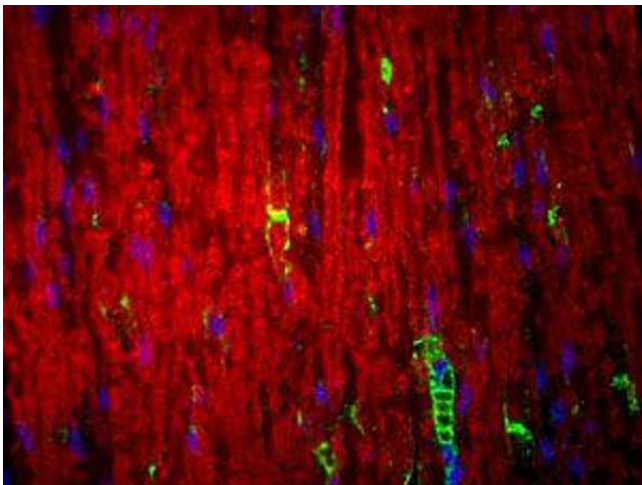
## Application Details

Application Notes:	Immunocytochemistry(1:1000-1:2000) Immunohistochemistry(1:1000-1:2000) The optimal working dilution should be determined by the end user.
Restrictions:	For Research Use only

## Handling

Format:	Liquid
Buffer:	In PBS, pH 7.2 (0.02 % sodium azide)
Preservative:	Sodium azide
Precaution of Use:	This product contains Sodium azide: a POISONOUS AND HAZARDOUS SUBSTANCE which should be handled by trained staff only.
Storage:	4 °C
Storage Comment:	Store at 4°C and avoid from light. Aliquot to avoid repeated freezing and thawing.

## Images



**Image 1.** MPZ polyclonal antibody was analyzed by immunocytological staining (at a concentration of 3 ug/mL). Positively stained Schwann cells (green), counter stained with LAMP (red) and DAPI (blue).