



Datasheet for ABIN5583707

## anti-Macrophage Mannose Receptor 1 antibody



[Go to Product page](#)

### 1 Image

#### Overview

Quantity:	50 µL
Target:	Macrophage Mannose Receptor 1 (MRC1)
Reactivity:	Schizosaccharomyces pombe
Host:	Rabbit
Clonality:	Polyclonal
Conjugate:	This Macrophage Mannose Receptor 1 antibody is un-conjugated
Application:	Western Blotting (WB)

#### Product Details

Purpose:	Rabbit polyclonal antibody raised against partial recombinant Mrc1.
Immunogen:	Recombinant protein corresponding to amino acids 1-317 <i>Schizosaccharomyces pombe</i> Mrc1.
Cross-Reactivity:	Schizosaccharomyces pombe

#### Target Details

Target:	Macrophage Mannose Receptor 1 (MRC1)
Alternative Name:	mrc1 ( <a href="#">MRC1 Products</a> )
Background:	Full Gene Name: mediator of replication checkpoint 1 (PMID 14585996)
Gene ID:	2543240

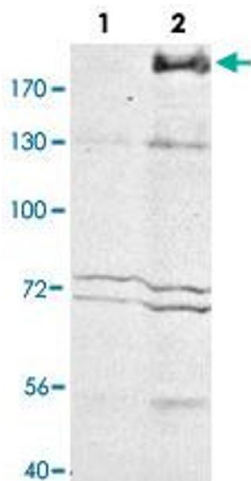
## Application Details

Application Notes:	Western Blot (1:3000) The optimal working dilution should be determined by the end user.
Restrictions:	For Research Use only

## Handling

Format:	Liquid
Buffer:	In antiserum (0.05 % sodium azide)
Preservative:	Sodium azide
Precaution of Use:	This product contains Sodium azide: a POISONOUS AND HAZARDOUS SUBSTANCE which should be handled by trained staff only.
Storage:	4 °C,-80 °C
Storage Comment:	Store at 4°C. For long term storage store at -80°C. Aliquot to avoid repeated freezing and thawing.

## Images



### Western Blotting

**Image 1.** Western blot analysis of Mrc1 in whole cell extracts. Lane 1, Mrc1 - strain. Lane 2, Wild type strain.