

Datasheet for ABIN5583708
anti-MYL12A antibody (Ser18)[Go to Product page](#)

1 Image

Overview

Quantity:	100 µg
Target:	MYL12A
Binding Specificity:	Ser18
Reactivity:	Human, Mouse, Rat
Host:	Rabbit
Clonality:	Polyclonal
Conjugate:	This MYL12A antibody is un-conjugated
Application:	Western Blotting (WB)

Product Details

Purpose:	Rabbit polyclonal antibody raised against synthetic peptide of MRCL3.
Immunogen:	A synthetic peptide corresponding to residues surrounding S18 of human MRCL3.
Sequence:	A-T-Sp-N-V
Cross-Reactivity:	Human, Mouse, Rat

Target Details

Target:	MYL12A
Alternative Name:	MRCL3 (MYL12A Products)
Background:	Full Gene Name: myosin regulatory light chain MRCL3 Synonyms: MLCB,MRCL3

Target Details

Gene ID: 10627

Application Details

Application Notes: Western Blot (1:500-1:1000)
The optimal working dilution should be determined by the end user.

Restrictions: For Research Use only

Handling

Format: Liquid

Concentration: 1 mg/mL

Buffer: In PBS (without Mg^{2+} and Ca^{2+}), 150 mM NaCl, pH 7.4 (50 % glycerol, 0.02 % sodium azide)

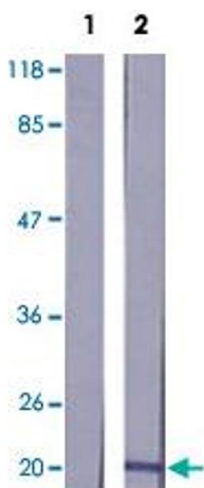
Preservative: Sodium azide

Precaution of Use: This product contains Sodium azide: a POISONOUS AND HAZARDOUS SUBSTANCE which should be handled by trained staff only.

Storage: -20 °C

Storage Comment: Store at -20°C.
Aliquot to avoid repeated freezing and thawing.

Images



Western Blotting

Image 1. Western blot analysis of extracts from K-562 cells using MYL12A polyclonal antibody .