



[Go to Product page](#)

Datasheet for ABIN5583813
anti-MSANTD2 antibody

2 Images

Overview

Quantity:	100 µL
Target:	MSANTD2
Reactivity:	Human
Host:	Rabbit
Clonality:	Polyclonal
Conjugate:	This MSANTD2 antibody is un-conjugated
Application:	Western Blotting (WB), Immunohistochemistry (Paraffin-embedded Sections) (IHC (p))

Product Details

Purpose:	Rabbit polyclonal antibody raised against recombinant MSANTD2.
Immunogen:	Recombinant protein corresponding to amino acids of human MSANTD2.
Sequence:	ETNALIAVWG NERLVEARYQ QLEGAGTVFG SKAPGPAMYE RVSRALAE LG YERTPSQCRE RIKTLRRCYS RVKEHGVGKR KSSYTFEQL E QVFGQ
Isotype:	IgG
Cross-Reactivity:	Human

Target Details

Target:	MSANTD2
Alternative Name:	MSANTD2 (MSANTD2 Products)
Background:	Full Gene Name: Myb/SANT-like DNA-binding domain containing 2

Target Details

Synonyms: C11orf61

Gene ID: 79684

Application Details

Application Notes: Immunohistochemistry (1:50-1:200)
Western Blot (1:250-1:500)
The optimal working dilution should be determined by the end user.

Restrictions: For Research Use only

Handling

Format: Liquid

Buffer: In PBS, pH 7.2 (40 % glycerol, 0.02 % sodium azide)

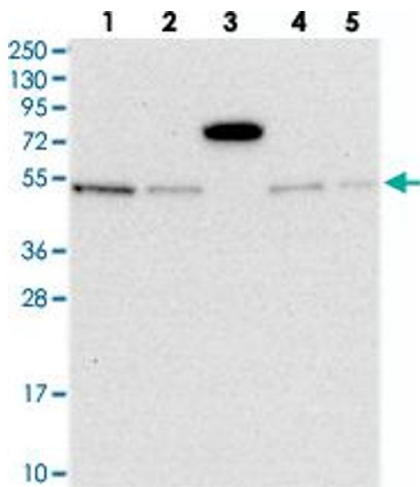
Preservative: Sodium azide

Precaution of Use: This product contains Sodium azide: a POISONOUS AND HAZARDOUS SUBSTANCE which should be handled by trained staff only.

Storage: 4 °C,-20 °C

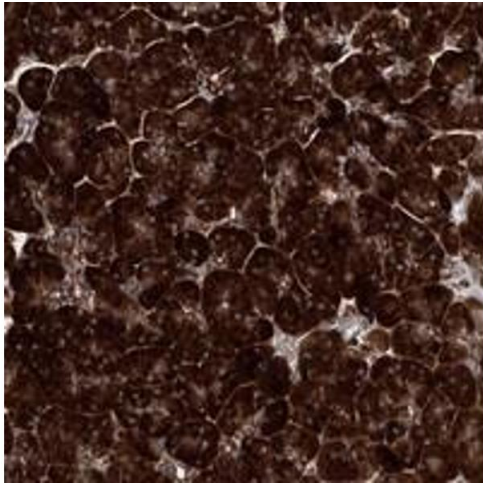
Storage Comment: Store at 4°C. For long term storage store at -20°C.
Aliquot to avoid repeated freezing and thawing.

Images



Western Blotting

Image 1. Western blot analysis of Lane 1: RT-4, Lane 2: U-251 MG, Lane 3: Human Plasma, Lane 4: Liver, Lane 5: Tonsil with MSANTD2 polyclonal antibody at 1:250-1:500 dilution.



Immunohistochemistry

Image 2. Immunohistochemical staining of human pancreas with MSANTD2 polyclonal antibody shows strong cytoplasmic positivity in exocrine glandular cells at 1:50-1:200 dilution.