

Datasheet for ABIN5583873  
**anti-MTBP antibody (AA 122-139)**[Go to Product page](#)

## 1 Image

## Overview

Quantity:	100 µg
Target:	MTBP
Binding Specificity:	AA 122-139
Reactivity:	Human
Host:	Rabbit
Clonality:	Polyclonal
Conjugate:	This MTBP antibody is un-conjugated
Application:	Western Blotting (WB)

## Product Details

Purpose:	Rabbit polyclonal antibody raised against synthetic peptide of MTBP.
Immunogen:	A synthetic peptide corresponding to amino acids 122-139 of human MTBP.
Sequence:	GAVECFEEED SNSRESLS
Cross-Reactivity:	Human
Characteristics:	Antibody Reactive Against Synthetic Peptide.

## Target Details

Target:	MTBP
Alternative Name:	MTBP ( <a href="#">MTBP Products</a> )
Background:	Full Gene Name: Mdm2, transformed 3T3 cell double minute 2, p53 binding protein (mouse)

Target Details

	binding protein, 104 kDa Synonyms: MDM2BP
Gene ID:	27085

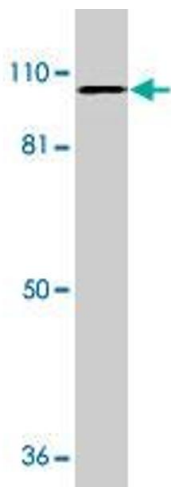
Application Details

Application Notes:	Western blot (0.5 to 1 µg/mL) The optimal working dilution should be determined by the end user.
Restrictions:	For Research Use only

Handling

Format:	Liquid
Buffer:	In PBS (0.02 % sodium azide)
Preservative:	Sodium azide
Precaution of Use:	This product contains Sodium azide: a POISONOUS AND HAZARDOUS SUBSTANCE which should be handled by trained staff only.
Storage:	-20 °C
Storage Comment:	Store at -20°C. Aliquot to avoid repeated freezing and thawing.

Images



**Western Blotting**

**Image 1.** Western blot analysis of MTBP expression in K-562 whole cell lysates with MTBP polyclonal antibody at 1 ug /mL .