

Datasheet for ABIN5584091

**anti-MYL12B antibody**[Go to Product page](#)**1** Image

## Overview

Quantity:	100 µL
Target:	MYL12B
Reactivity:	Human
Host:	Mouse
Clonality:	Monoclonal
Conjugate:	This MYL12B antibody is un-conjugated
Application:	Western Blotting (WB), ELISA

## Product Details

Purpose:	Mouse monoclonal antibody raised against full length recombinant MYL12B.
Immunogen:	Recombinant protein corresponding to full length human MYL12B.
Clone:	401s3
Isotype:	IgG1
Specificity:	This antibody recognizes recombinant protein MRLC2.
Cross-Reactivity:	Human

## Target Details

Target:	MYL12B
Alternative Name:	MRLC2 ( <a href="#">MYL12B Products</a> )
Background:	Full Gene Name: myosin regulatory light chain MRLC2

Target Details

	Synonyms: MLC-B
Gene ID:	103910
Pathways:	<a href="#">Feeding Behaviour</a>

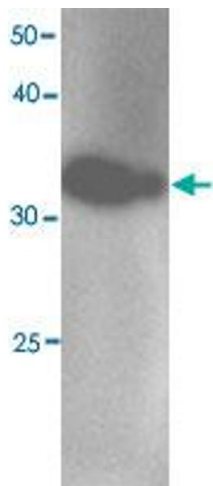
Application Details

Application Notes:	Western Blot (1:1000) The optimal working dilution should be determined by the end user.
Restrictions:	For Research Use only

Handling

Format:	Liquid
Concentration:	1 µg/µL
Buffer:	In citrate-Tris-HCl, pH 7.0 (0.02 % Proclin 300)
Preservative:	ProClin
Precaution of Use:	This product contains ProClin: a POISONOUS AND HAZARDOUS SUBSTANCE which should be handled by trained staff only.
Storage:	-20 °C
Storage Comment:	Store at -20°C. Aliquot to avoid repeated freezing and thawing.

Images



**Western Blotting**

**Image 1.** Western blot analysis in MYL12B recombinant protein with MYL12B monoclonal antibody, clone 401s3 at 1 : 1000 dilution.