

Datasheet for ABIN5584093
anti-MYL2 antibody (pTyr118)[Go to Product page](#)

1 Image

Overview

Quantity:	100 µL
Target:	MYL2
Binding Specificity:	pTyr118
Reactivity:	Human
Host:	Rabbit
Clonality:	Polyclonal
Conjugate:	This MYL2 antibody is un-conjugated
Application:	Western Blotting (WB), Immunofluorescence (IF)

Product Details

Purpose:	Rabbit polyclonal antibody raised against synthetic phosphopeptide of human MYL2.
Immunogen:	A synthetic phosphopeptide (conjugated with KLH) corresponding to residues surrounding Y118 of human MYL2.
Specificity:	MYL2 (phospho Y118) polyclonal antibody detects endogenous level of MYL2 only when phosphorylated at tyrosine 118.
Cross-Reactivity:	Human

Target Details

Target:	MYL2
Alternative Name:	MYL2 (MYL2 Products)

Target Details

Background: Full Gene Name: myosin, light chain 2, regulatory, cardiac, slow
Synonyms: CMH10,DKFZp779C0562,MLC2

Gene ID: 4633

Pathways: [Myometrial Relaxation and Contraction](#)

Application Details

Application Notes: Immunofluorescence (1:100-1:200)
Western Blot (1:500-1:1000)
The optimal working dilution should be determined by the end user.

Restrictions: For Research Use only

Handling

Format: Liquid

Buffer: In PBS (without Mg^{2+} and Ca^{2+}), 150 mM NaCl, pH 7.4 (50 % glycerol, 0.02 % sodium azide)

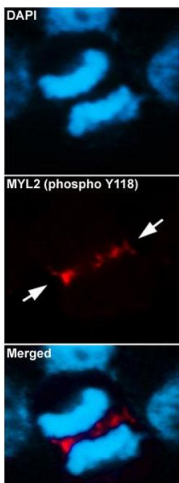
Preservative: Sodium azide

Precaution of Use: This product contains Sodium azide: a POISONOUS AND HAZARDOUS SUBSTANCE which should be handled by trained staff only.

Storage: -20 °C

Storage Comment: Store at -20°C.
Aliquot to avoid repeated freezing and thawing.

Images



Immunofluorescence

Image 1. Immunofluorescent staining of methanol-fixed U87 cells using MYL2 (phospho Y118) polyclonal antibody at 1:100-1:200 dilution.