

Datasheet for ABIN5584095

anti-MYL2 antibody**1** Image[Go to Product page](#)

Overview

Quantity:	100 µL
Target:	MYL2
Reactivity:	Human
Host:	Mouse
Clonality:	Monoclonal
Conjugate:	This MYL2 antibody is un-conjugated
Application:	Western Blotting (WB), ELISA, Immunofluorescence (IF), Immunocytochemistry (ICC), Flow Cytometry (FACS)

Product Details

Purpose:	Mouse monoclonal antibody raised against full length recombinant MYL2.
Immunogen:	Recombinant protein corresponding to full length human MYL2.
Clone:	AT3B2
Isotype:	IgG2b
Cross-Reactivity:	Human, Rat

Target Details

Target:	MYL2
Alternative Name:	MYL2 (MYL2 Products)
Background:	Full Gene Name: myosin, light chain 2, regulatory, cardiac, slow

Target Details

	Synonyms: CMH10,DKFZp779C0562,MLC2
Gene ID:	4633
Pathways:	Myometrial Relaxation and Contraction

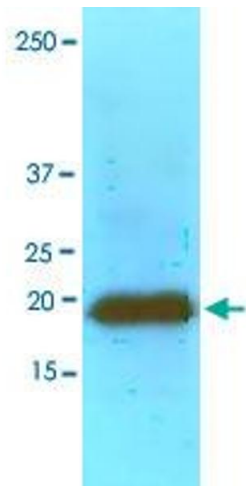
Application Details

Application Notes:	The optimal working dilution should be determined by the end user.
Restrictions:	For Research Use only

Handling

Format:	Liquid
Buffer:	In PBS, pH 7.4 (10 % glycerol, 0.02 % sodium azide).
Preservative:	Sodium azide
Precaution of Use:	This product contains Sodium azide: a POISONOUS AND HAZARDOUS SUBSTANCE which should be handled by trained staff only.
Storage:	-20 °C,-80 °C
Storage Comment:	Store at 2°C to 8°C for 1 week. For long term storage, aliquot and store at -20°C to -80°C. Aliquot to avoid repeated freezing and thawing.

Images



Western Blotting

Image 1. Western blot analysis of rat heart extracts (60 ug) were resolved by SDS-PAGE, transferred to NC membrane and probed with MYL2 monoclonal antibody, clone AT3B2 (1 : 1000). Proteins were visualized using a goat anti-mouse secondary antibody conjugated to HRP and an ECL detection system.