

Datasheet for ABIN5584102  
**anti-MYLK3 antibody (AA 40-69)**[Go to Product page](#)

## 2 Images

## Overview

|                      |  |
|----------------------|--|
| Quantity:            | 400 µL   |
| Target:              | MYLK3  |
| Binding Specificity: | AA 40-69   |
| Reactivity:          | Human, Mouse   |
| Host:                | Rabbit   |
| Clonality:           | Polyclonal   |
| Conjugate:           | This MYLK3 antibody is un-conjugated   |
| Application:         | Western Blotting (WB), Immunohistochemistry (Paraffin-embedded Sections) (IHC (p)) |

## Product Details

|                   |  |
|-------------------|--|
| Purpose:          | Rabbit polyclonal antibody raised against synthetic peptide of MYLK3.                                      |
| Immunogen:        | A synthetic peptide (conjugated with KLH) corresponding to amino acids 40-69 at N-terminus of human MYLK3. |
| Cross-Reactivity: | Human, Mouse   |

## Target Details

|                   |  |
|-------------------|--|
| Target:           | MYLK3  |
| Alternative Name: | MYLK3 ( <a href="#">MYLK3 Products</a> )   |
| Background:       | Full Gene Name: myosin light chain kinase 3<br>Synonyms: MGC126319,MGC126320,MLCK,MLCK2,caMLCK |

Target Details

|           |   |
|-----------|---|
| Gene ID:  | 91807                                     |
| Pathways: | Regulation of Muscle Cell Differentiation |

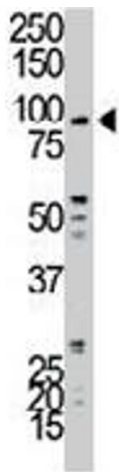
Application Details

|                    |  |
|--------------------|--|
| Application Notes: | Immunohistochemistry (Formalin/PFA-fixed paraffin-embedded sections) (1:50-100)<br>Western Blot (1:1000)<br>The optimal working dilution should be determined by the end user. |
| Restrictions:      | For Research Use only  |

Handling

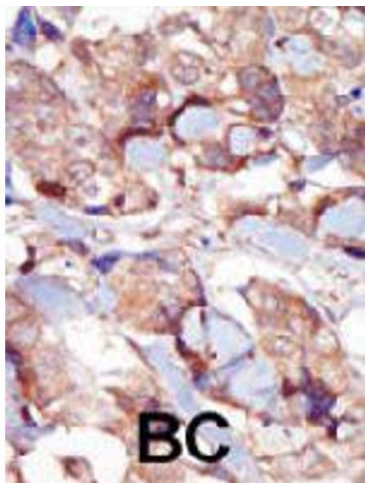
|                    |  |
|--------------------|--|
| Format:            | Liquid   |
| Buffer:            | In PBS (0.09 % sodium azide)   |
| Preservative:      | Sodium azide   |
| Precaution of Use: | This product contains Sodium azide: a POISONOUS AND HAZARDOUS SUBSTANCE which should be handled by trained staff only. |
| Storage:           | 4 °C,-20 °C  |
| Storage Comment:   | Store at 4°C. For long term storage store at -20°C.<br>Aliquot to avoid repeated freezing and thawing.                 |

Images



**Western Blotting**

**Image 1.** Western Blot (Cell lysate) analysis of A-375 cell lysate with MYLK3 polyclonal antibody . Secondary HRP-anti-rabbit was used for signal visualization with chemiluminescence.



#### Immunohistochemistry

**Image 2.** Immunohistochemistry (Formalin/PFA-fixed paraffin-embedded sections) of human breast carcinoma with MYLK3 polyclonal antibody , followed by peroxidase-conjugated secondary antibody and DAB staining.