

Datasheet for ABIN5584189
anti-NANS antibody (AA 1-359)[Go to Product page](#)

2 Images

Overview

Quantity:	50 µL
Target:	NANS
Binding Specificity:	AA 1-359
Reactivity:	Human
Host:	Mouse
Clonality:	Monoclonal
Conjugate:	This NANS antibody is un-conjugated
Application:	Western Blotting (WB), ELISA, Immunohistochemistry (Paraffin-embedded Sections) (IHC (p))

Product Details

Purpose:	Mouse monoclonal antibody raised against human NANS.
Immunogen:	Recombinant protein corresponding to amino acids 1-359 of human NANS.
Clone:	AT1G6
Isotype:	IgG1
Cross-Reactivity:	Human

Target Details

Target:	NANS
Alternative Name:	NANS (NANS Products)
Background:	Full Gene Name: N-acetylneuraminic acid synthase

Target Details

	Synonyms: SAS
Gene ID:	54187

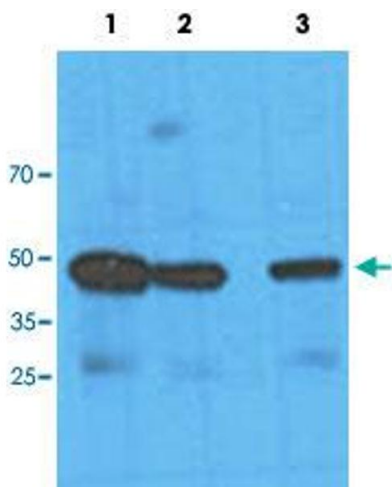
Application Details

Application Notes:	ELISA Immunohistochemistry (Formalin/PFA-fixed paraffin-embedded sections) (10 µg/mL) Western Blot (1:1000) The optimal working dilution should be determined by the end user.
Restrictions:	For Research Use only

Handling

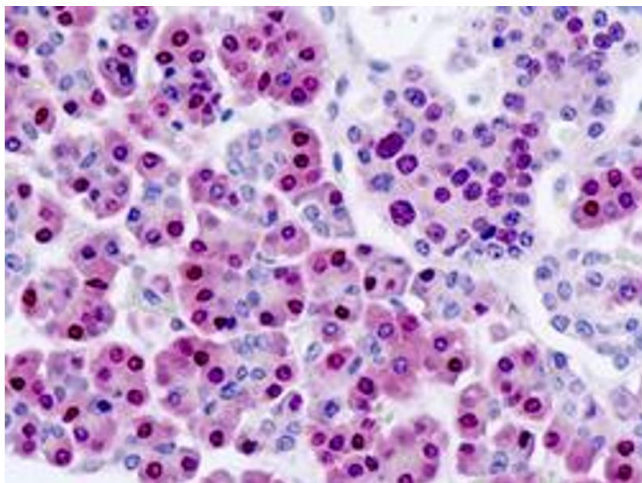
Format:	Liquid
Buffer:	In PBS, pH 7.4 (0.09 % sodium azide).
Preservative:	Sodium azide
Precaution of Use:	This product contains Sodium azide: a POISONOUS AND HAZARDOUS SUBSTANCE which should be handled by trained staff only.
Storage:	4 °C, -20 °C
Storage Comment:	Store at 4°C. For long term storage store at -20°C. Aliquot to avoid repeated freezing and thawing.

Images



Western Blotting

Image 1. Western blot analysis of HeLa cell lysate with NANS monoclonal antibody, clone AT1G6 at Lane 1: 1:100 dilution, Lane 2: 1:1000 dilution and Lane 3: 1:3000 dilution followed by HRP-conjugated goat anti-mouse secondary antibody and visualized by ECL detection system.



Immunohistochemistry

Image 2. Immunohistochemical staining (Formalin-fixed paraffin-embedded sections) of human pancreas with NANS monoclonal antibody, clone AT1G6 .