



[Go to Product page](#)

Datasheet for ABIN5584190  
**anti-NAP1L6 antibody**

1 Image

Overview

Quantity:	100 µL
Target:	NAP1L6
Reactivity:	Human
Host:	Rabbit
Clonality:	Polyclonal
Conjugate:	This NAP1L6 antibody is un-conjugated
Application:	Immunohistochemistry (Paraffin-embedded Sections) (IHC (p))

Product Details

Purpose:	Rabbit polyclonal antibody raised against recombinant NAP1L6.
Immunogen:	Recombinant protein corresponding to amino acids of recombinant NAP1L6.
Sequence:	MMEGLGEHST AGEMGPLLGA VAATASPQSL MEYSSDADFI ESLPLVVKYR VYTLKKLQAK CAVLEAKYLR EFHSVE
Isotype:	IgG
Cross-Reactivity:	Human

Target Details

Target:	NAP1L6
Alternative Name:	NAP1L6 ( <a href="#">NAP1L6 Products</a> )
Background:	Full Gene Name: nucleosome assembly protein 1-like 6

## Target Details

Synonyms: FLJ33596

Gene ID: 645996

## Application Details

Application Notes: Immunohistochemistry (1:50-1:200)  
The optimal working dilution should be determined by the end user.

Restrictions: For Research Use only

## Handling

Format: Liquid

Buffer: In PBS, pH 7.2 (40 % glycerol, 0.02 % sodium azide)

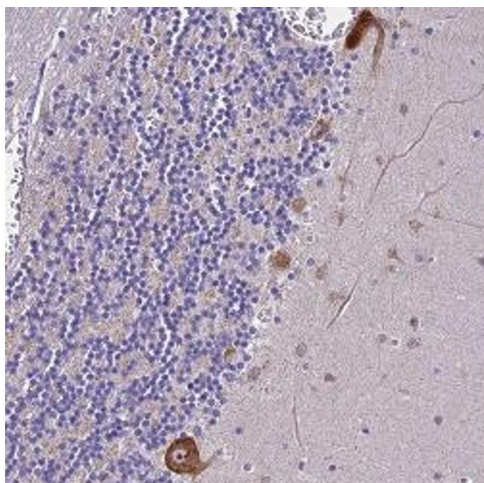
Preservative: Sodium azide

Precaution of Use: This product contains Sodium azide: a POISONOUS AND HAZARDOUS SUBSTANCE which should be handled by trained staff only.

Storage: 4 °C, -20 °C

Storage Comment: Store at 4°C. For long term storage store at -20°C.  
Aliquot to avoid repeated freezing and thawing.

## Images



### Immunohistochemistry

**Image 1.** Immunohistochemical staining of human cerebellum with NAP1L6 polyclonal antibody ( Cat # PAB28294 ) shows strong cytoplasmic positivity in Purkinje cells at 1:50 - 1:200 dilution.