

Datasheet for ABIN5584205
anti-NAT6 antibody (AA 1-308)[Go to Product page](#)

2 Images

Overview

Quantity:	100 µL
Target:	NAT6
Binding Specificity:	AA 1-308
Reactivity:	Human
Host:	Mouse
Clonality:	Monoclonal
Conjugate:	This NAT6 antibody is un-conjugated
Application:	Western Blotting (WB), ELISA, Immunofluorescence (IF), Immunocytochemistry (ICC), Flow Cytometry (FACS)

Product Details

Purpose:	Mouse monoclonal antibody raised against full length recombinant NAT6.
Immunogen:	Recombinant protein corresponding to amino acids 1-308 of human NAT6.
Clone:	AT2F4
Isotype:	IgG1
Cross-Reactivity:	Human

Target Details

Target:	NAT6
Alternative Name:	NAT6 (NAT6 Products)

Target Details

Background: Full Gene Name: N-acetyltransferase 6 (GCN5-related)
Synonyms: FUS-2,FUS2

Gene ID: 24142

Application Details

Application Notes: The optimal working dilution should be determined by the end user.

Restrictions: For Research Use only

Handling

Format: Liquid

Buffer: In PBS, pH 7.4 (10 % glycerol, 0.02 % sodium azide).

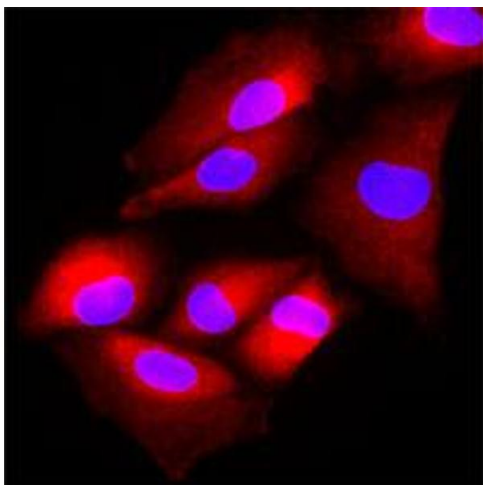
Preservative: Sodium azide

Precaution of Use: This product contains Sodium azide: a POISONOUS AND HAZARDOUS SUBSTANCE which should be handled by trained staff only.

Storage: -20 °C,-80 °C

Storage Comment: Store at 2°C to 8°C for 1 week. For long term storage, aliquot and store at -20°C to -80°C.
Aliquot to avoid repeated freezing and thawing.

Images



Immunofluorescence

Image 1. Immunofluorescence of human A-549 cells stained with Hoechst 33342 (Blue) and NAT6 monoclonal antibody, clone AT2F4 (1 : 500) with Texas Red (red).

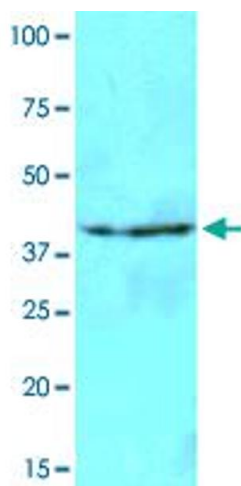


Image 2. Cell lysates of NIH/3T3 (40 ug) were resolved by SDS-PAGE, transferred to NC membrane and probed with NAT6 monoclonal antibody, clone AT2F4 (1 : 500). Proteins were visualized using a goat anti-mouse secondary antibody conjugated to HRP and an ECL detection system.