



[Go to Product page](#)

Datasheet for ABIN5584257
anti-NCBP2L antibody

1 Image

Overview

Quantity:	100 µL
Target:	NCBP2L
Reactivity:	Human
Host:	Rabbit
Clonality:	Polyclonal
Application:	Immunohistochemistry (Paraffin-embedded Sections) (IHC (p))

Product Details

Purpose:	Rabbit polyclonal antibody raised against recombinant NCBP2L.
Immunogen:	Recombinant protein corresponding to amino acids of recombinant NCBP2L.
Sequence:	RDHQFSGRKF QQEKLLKES TLNMGNLSFY TTEEKIHEL FSRSDIRNIFM GLDKIKKTAC GFCFVECHNR ADAENAMRFL TGTCLDEWII CTDWDVGFRE GQQ
Isotype:	IgG
Cross-Reactivity:	Human

Target Details

Target:	NCBP2L
Alternative Name:	NCBP2L (NCBP2L Products)
Background:	Full Gene Name: nuclear cap binding protein subunit 2-like Synonyms: dJ820B18.1

Target Details

Gene ID: 392517

Application Details

Application Notes: Immunohistochemistry (1:200-1:500)
The optimal working dilution should be determined by the end user.

Restrictions: For Research Use only

Handling

Format: Liquid

Buffer: In PBS, pH 7.2 (40 % glycerol, 0.02 % sodium azide)

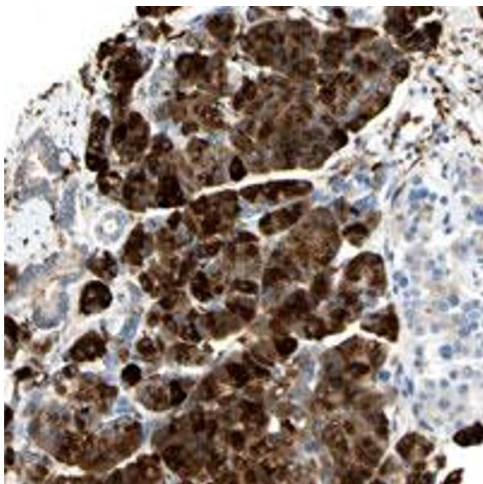
Preservative: Sodium azide

Precaution of Use: This product contains Sodium azide: a POISONOUS AND HAZARDOUS SUBSTANCE which should be handled by trained staff only.

Storage: 4 °C, -20 °C

Storage Comment: Store at 4°C. For long term storage store at -20°C.
Aliquot to avoid repeated freezing and thawing.

Images



Immunohistochemistry

Image 1. Immunohistochemical staining of human pancreas with NCBP2L polyclonal antibody shows strong cytoplasmic positivity in exocrine glandular cells at 1:200-1:500 dilution.