

Datasheet for ABIN5584670

**anti-NPDC1 antibody**[Go to Product page](#)**1** Image

## Overview

Quantity:	100 µg
Target:	NPDC1
Reactivity:	Human, Mouse, Rat
Host:	Mouse
Clonality:	Monoclonal
Conjugate:	This NPDC1 antibody is un-conjugated
Application:	Western Blotting (WB), Immunohistochemistry (IHC)

## Product Details

Purpose:	Mouse monoclonal antibody raised against synthetic peptide of NPDC1.
Immunogen:	A synthetic peptide corresponding to human NPDC1.
Clone:	16E4
Isotype:	IgG1
Cross-Reactivity:	Human, Mouse, Rat
Characteristics:	Antibody Reactive Against Synthetic Peptide.

## Target Details

Target:	NPDC1
Alternative Name:	NPDC1 ( <a href="#">NPDC1 Products</a> )
Background:	Full Gene Name: neural proliferation, differentiation and control, 1

## Target Details

Synonyms: CAB,CAB-,CAB-1,CAB1,DKFZp586J0523

Gene ID: 56654

## Application Details

Application Notes: Western blot (1:1000)  
The optimal working dilution should be determined by the end user.

Restrictions: For Research Use only

## Handling

Format: Liquid

Buffer: In 20 mM sodium phosphate buffer, 150 mM NaCl, pH 7.5 (50 % glycerol, 3 mM sodium azide)

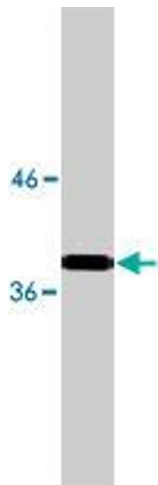
Preservative: Sodium azide

Precaution of Use: This product contains Sodium azide: a POISONOUS AND HAZARDOUS SUBSTANCE which should be handled by trained staff only.

Storage: -20 °C

Storage Comment: Store at -20°C.  
Aliquot to avoid repeated freezing and thawing.

## Images



### Western Blotting

**Image 1.** Western blot using NPDC1 monoclonal antibody, clone 16E4 on 10 ug lysate transfected with NPDC1 protein at a dilution of 1 ug/mL .