

Datasheet for ABIN5584672

**anti-NPDC1 antibody****3** Images[Go to Product page](#)

## Overview

|              |   |
|--------------|---|
| Quantity:    | 100 µL  |
| Target:      | NPDC1   |
| Reactivity:  | Human   |
| Host:        | Rabbit  |
| Clonality:   | Polyclonal  |
| Conjugate:   | This NPDC1 antibody is un-conjugated  |
| Application: | Western Blotting (WB), Immunohistochemistry (Paraffin-embedded Sections) (IHC (p)), Immunofluorescence (IF) |

## Product Details

|                   |  |
|-------------------|--|
| Purpose:          | Rabbit polyclonal antibody raised against partial recombinant human NPDC1.   |
| Immunogen:        | Recombinant protein corresponding to human NPDC1.  |
| Sequence:         | CWCRLQREIR LTQKADYATA KAPGSPAAPR ISPGDQRLAQ SAEMYHYQH QQQMLCLERH<br>KEPPKELDTA SSDEENEDGD FTVYECPLA PTGEMEVRNP LFDHAALSAP LPAPSSPPAL P |
| Isotype:          | IgG  |
| Cross-Reactivity: | Human  |

## Target Details

|                   |  |
|-------------------|--|
| Target:           | NPDC1                                    |
| Alternative Name: | NPDC1 ( <a href="#">NPDC1 Products</a> ) |

## Target Details

Background: Full Gene Name: neural proliferation, differentiation and control, 1  
Synonyms: CAB,CAB-,CAB-1,CAB1,DKFZp586J0523

Gene ID: 56654

## Application Details

Application Notes: Immunofluorescence (1-4 µg/mL)  
Immunohistochemistry (Formalin/PFA-fixed paraffin-embedded sections) (1:20-1:50)  
Western Blot (1:100-1:250)  
The optimal working dilution should be determined by the end user.

Restrictions: For Research Use only

## Handling

Format: Liquid

Buffer: In PBS, pH 7.2 (40 % glycerol, 0.02 % sodium azide).

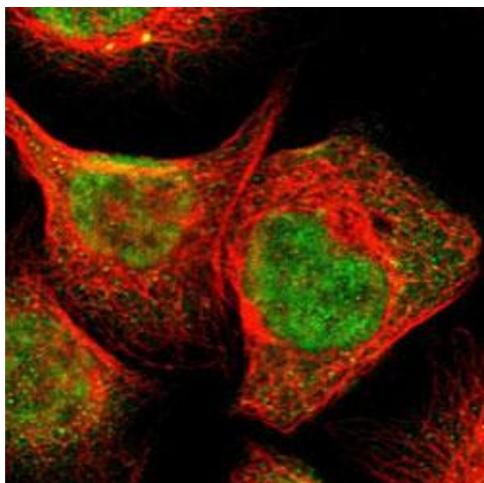
Preservative: Sodium azide

Precaution of Use: This product contains Sodium azide: a POISONOUS AND HAZARDOUS SUBSTANCE which should be handled by trained staff only.

Storage: 4 °C,-20 °C

Storage Comment: Store at 4°C. For long term storage store at -20°C.  
Aliquot to avoid repeated freezing and thawing.

## Images



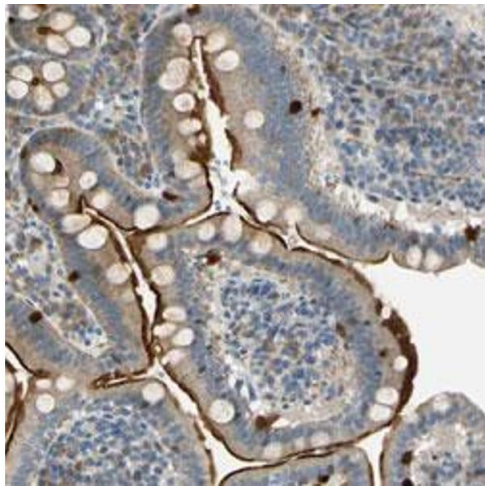
### Immunofluorescence

**Image 1.** Immunofluorescent staining of A-431 cells with NPDC1 polyclonal antibody (Green) shows positivity in cytoplasm and nucleus but excluded from the nucleoli.



### Western Blotting

**Image 2.** Western Blot analysis of Lane 1: negative control (vector only transfected HEK293T cell lysate) and Lane 2: over-expression lysate (co-expressed with a C-terminal myc-DDK tag in mammalian HEK293T cells) with NPDC1 polyclonal antibody .



### Immunohistochemistry

**Image 3.** Immunohistochemical staining (Formalin-fixed paraffin-embedded sections) of human duodenum with NPDC1 polyclonal antibody shows strong membranous positivity in glandular cells.