

Datasheet for ABIN5584723

**anti-NR2E3 antibody**[Go to Product page](#)**1** Image

## Overview

Quantity:	50 µg
Target:	NR2E3
Reactivity:	Human, Mouse, Cow, Horse, Pig, Hamster, Gorilla, Chimpanzee
Host:	Rabbit
Clonality:	Polyclonal
Conjugate:	This NR2E3 antibody is un-conjugated
Application:	Immunohistochemistry (Paraffin-embedded Sections) (IHC (p))

## Product Details

Purpose:	Rabbit polyclonal antibody raised against synthetic peptide of NR2E3.
Immunogen:	A synthetic peptide corresponding to 19 amino acid at ligand-binding domain of human NR2E3.
Specificity:	BLAST analysis of the peptide immunogen showed no homology with other human proteins.
Cross-Reactivity:	Chimpanzee, Cow, Gorilla, Hamster, Horse, Human, Mouse, Pig
Cross-Reactivity (Details):	BLAST analysis of the peptide immunogen showed no homology with other human proteins.

## Target Details

Target:	NR2E3
Alternative Name:	NR2E3 ( <a href="#">NR2E3 Products</a> )
Background:	Full Gene Name: nuclear receptor subfamily 2, group E, member 3 Synonyms: ESCS,MGC49976,PNR,RNR,RP37,rd7

## Target Details

Gene ID:	10002
Pathways:	<a href="#">Nuclear Receptor Transcription Pathway</a> , <a href="#">Steroid Hormone Mediated Signaling Pathway</a>

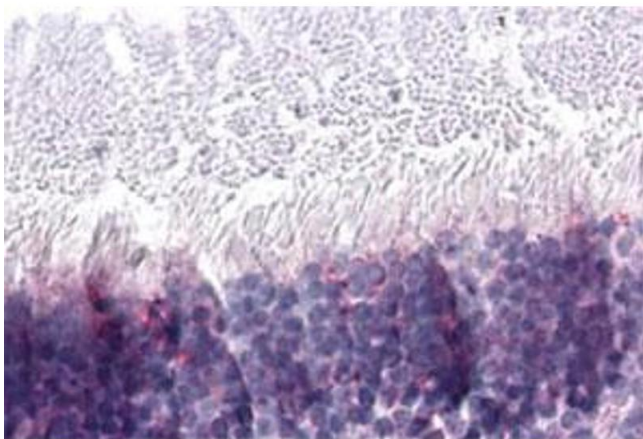
## Application Details

Application Notes:	Immunohistochemistry (Formalin/PFA-fixed paraffin-embedded sections) (30 µg/mL) The optimal working dilution should be determined by the end user.
Restrictions:	For Research Use only

## Handling

Format:	Liquid
Buffer:	In PBS (0.09 % sodium azide)
Preservative:	Sodium azide
Precaution of Use:	This product contains Sodium azide: a POISONOUS AND HAZARDOUS SUBSTANCE which should be handled by trained staff only.
Storage:	4 °C,-80 °C
Storage Comment:	Store at 4°C. For long term storage store at -80°C. Aliquot to avoid repeated freezing and thawing.

## Images



### Immunohistochemistry

**Image 1.** Immunohistochemistry (Formalin/PFA-fixed paraffin-embedded sections) of human retina tissue with NR2E3 polyclonal antibody . Immunohistochemistry of formalin-fixed, paraffin-embedded tissue after heat-induced antigen retrieval.