

Datasheet for ABIN5584738  
**anti-NR4A3 antibody (Internal Region)**[Go to Product page](#)

## 2 Images

## Overview

Quantity:	50 µg
Target:	NR4A3
Binding Specificity:	Internal Region
Reactivity:	Human, Rabbit, Cow, Pig, Dog, Gorilla
Host:	Rabbit
Clonality:	Polyclonal
Conjugate:	This NR4A3 antibody is un-conjugated
Application:	Immunohistochemistry (Paraffin-embedded Sections) (IHC (p))

## Product Details

Purpose:	Rabbit polyclonal antibody raised against synthetic peptide of NR4A3.
Immunogen:	A synthetic peptide corresponding to 17 amino acid at internal region of human NR4A3.
Specificity:	BLAST analysis of the peptide immunogen showed no homology with other human proteins.
Cross-Reactivity:	Cow, Dog, Gorilla, Human, Pig, Rabbit
Cross-Reactivity (Details):	BLAST analysis of the peptide immunogen showed no homology with other human proteins.

## Target Details

Target:	NR4A3
Alternative Name:	NR4A3 ( <a href="#">NR4A3 Products</a> )
Background:	Full Gene Name: nuclear receptor subfamily 4, group A, member 3

## Target Details

	Synonyms: CHN,CSMF,MINOR,NOR1,TEC
Gene ID:	8013
Pathways:	<a href="#">Fc-epsilon Receptor Signaling Pathway</a> , <a href="#">Nuclear Receptor Transcription Pathway</a> , <a href="#">Steroid Hormone Mediated Signaling Pathway</a>

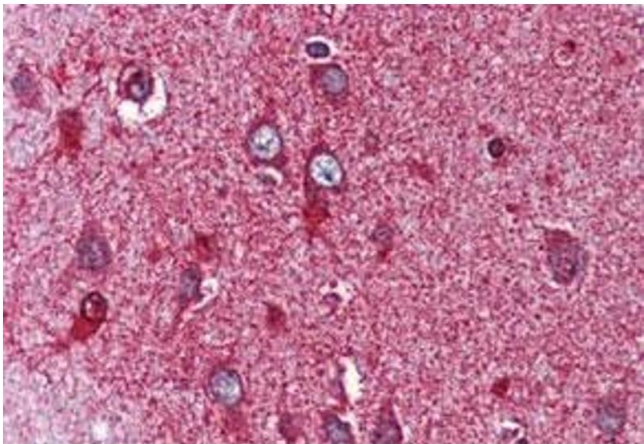
## Application Details

Application Notes:	Immunohistochemistry (Formalin/PFA-fixed paraffin-embedded sections) (10 µg/mL) The optimal working dilution should be determined by the end user.
Restrictions:	For Research Use only

## Handling

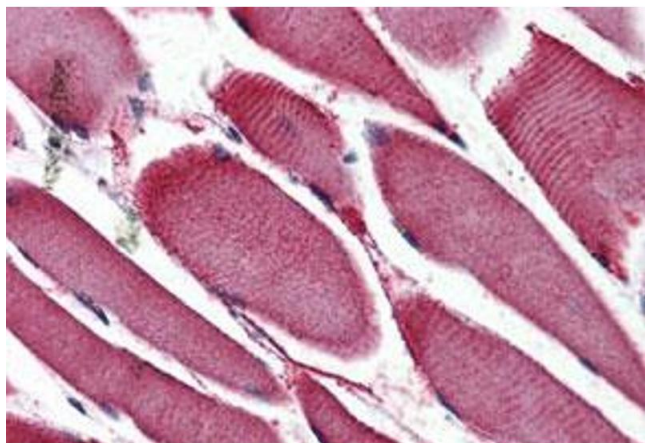
Format:	Liquid
Buffer:	In PBS (0.09 % sodium azide)
Preservative:	Sodium azide
Precaution of Use:	This product contains Sodium azide: a POISONOUS AND HAZARDOUS SUBSTANCE which should be handled by trained staff only.
Storage:	4 °C,-80 °C
Storage Comment:	Store at 4°C. For long term storage store at -80°C. Aliquot to avoid repeated freezing and thawing.

## Images



### Immunohistochemistry

**Image 1.** Immunohistochemistry (Formalin/PFA-fixed paraffin-embedded sections) of human brain, cortex with NR4A3 polyclonal antibody . Immunohistochemistry of formalin-fixed, paraffin-embedded tissue after heat-induced antigen retrieval.



#### Immunohistochemistry

**Image 2.** Immunohistochemistry (Formalin/PFA-fixed paraffin-embedded sections) of human skeletal muscle tissue with NR4A3 polyclonal antibody . Immunohistochemistry of formalin-fixed, paraffin-embedded tissue after heat-induced antigen retrieval.