

Datasheet for ABIN5584795

anti-Netrin 1 antibody[Go to Product page](#)**1** Image

Overview

Quantity:	100 µg
Target:	Netrin 1 (NTN1)
Reactivity:	Human, Mouse, Rat, Cow, Cat, Macaque
Host:	Rabbit
Clonality:	Polyclonal
Conjugate:	This Netrin 1 antibody is un-conjugated
Application:	Western Blotting (WB)

Product Details

Purpose:	Rabbit polyclonal antibody raised against synthetic peptide of NTN1.
Immunogen:	A synthetic peptide corresponding to human NTN1.
Cross-Reactivity:	Cat, Cow, Human, Macaque, Mouse, Rat
Characteristics:	Antibody Reactive Against Synthetic Peptide.

Target Details

Target:	Netrin 1 (NTN1)
Alternative Name:	NTN1 (NTN1 Products)
Background:	Full Gene Name: netrin 1 Synonyms: NTN1L
Gene ID:	9423

Target Details

Pathways: [Regulation of Cell Size](#)

Application Details

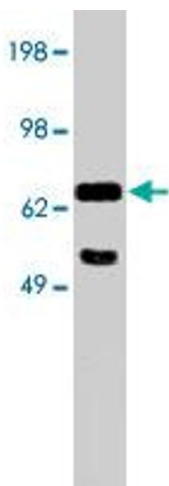
Application Notes: Western blot (0.5 to 2 µg/mL)
The optimal working dilution should be determined by the end user.

Restrictions: For Research Use only

Handling

Format:	Liquid
Buffer:	In PBS (0.08 % sodium azide)
Preservative:	Sodium azide
Precaution of Use:	This product contains Sodium azide: a POISONOUS AND HAZARDOUS SUBSTANCE which should be handled by trained staff only.
Storage:	-20 °C
Storage Comment:	Store at -20°C. Aliquot to avoid repeated freezing and thawing.

Images



Western Blotting

Image 1. Western blot using NTN1 polyclonal antibody at 5 µg/mL on MDCK II cell extract (10 µg/lane).