

Datasheet for ABIN5584796

anti-Netrin 1 antibody[Go to Product page](#)**1** Image

Overview

Quantity:	100 µg
Target:	Netrin 1 (NTN1)
Reactivity:	Human, Mouse
Host:	Chicken
Clonality:	Polyclonal
Conjugate:	This Netrin 1 antibody is un-conjugated
Application:	Immunohistochemistry (IHC), Immunocytochemistry (ICC)

Product Details

Purpose:	Chicken polyclonal antibody raised against recombinant Human NTN1.
Immunogen:	A KLH-conjugated synthetic peptide corresponding to the NTN1 gene product shared between the human and mouse sequences.
Isotype:	IgY
Cross-Reactivity:	Human, Mouse
Characteristics:	Immunocytochemistry

Target Details

Target:	Netrin 1 (NTN1)
Alternative Name:	NTN1 (NTN1 Products)
Background:	Full Gene Name: netrin 1

Target Details

	Synonyms: NTN1L
Gene ID:	9423, 18208
Pathways:	Regulation of Cell Size

Application Details

Application Notes:	Immunocytochemistry(1:1000-1:2000) Immunohistochemistry(1:1000-1:2000) The optimal working dilution should be determined by the end user.
Restrictions:	For Research Use only

Handling

Format:	Liquid
Buffer:	In PBS, pH 7.2 (0.02 % sodium azide)
Preservative:	Sodium azide
Precaution of Use:	This product contains Sodium azide: a POISONOUS AND HAZARDOUS SUBSTANCE which should be handled by trained staff only.
Storage:	4 °C
Storage Comment:	Store at 4°C and avoid from light. Aliquot to avoid repeated freezing and thawing.

Images

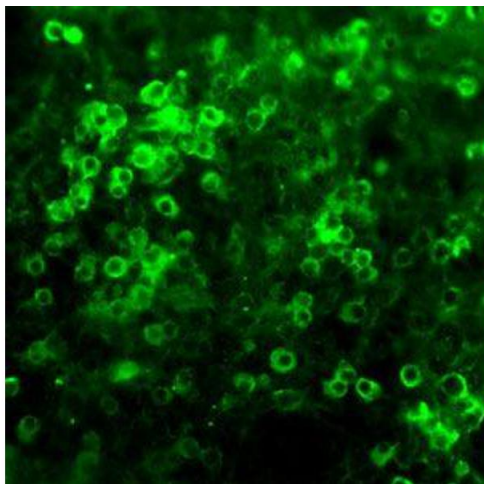


Image 1. NTN1 polyclonal antibody was analyzed by immunocytological staining (at a concentration of 3 ug/mL). NTN1-positive cultured neurones (green) from an e13.5 mouse brain.