

Datasheet for ABIN5584870
anti-NXF1 antibody (AA 1-30)[Go to Product page](#)

2 Images

Overview

Quantity:	400 µL
Target:	NXF1
Binding Specificity:	AA 1-30
Reactivity:	Human
Host:	Rabbit
Clonality:	Polyclonal
Conjugate:	This NXF1 antibody is un-conjugated
Application:	Western Blotting (WB), Immunohistochemistry (Paraffin-embedded Sections) (IHC (p))

Product Details

Purpose:	Rabbit polyclonal antibody raised against synthetic peptide of NXF1
Immunogen:	A synthetic peptide (conjugated with KLH) corresponding to amino acids 1-30 at N-terminal region at human NXF1.
Cross-Reactivity:	Human

Target Details

Target:	NXF1
Alternative Name:	NXF1 (NXF1 Products)
Background:	Full Gene Name: nuclear RNA export factor 1 Synonyms: DKFZp667O0311,MEX67,TAP

Target Details

Gene ID: 10482

Application Details

Application Notes: Immunohistochemistry (1:10-50)
Western Blot (1:1000)
The optimal working dilution should be determined by the end user.

Restrictions: For Research Use only

Handling

Format: Liquid

Buffer: In PBS (0.09 % sodium azide)

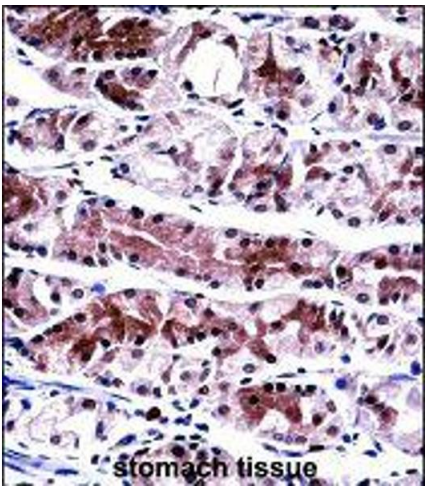
Preservative: Sodium azide

Precaution of Use: This product contains Sodium azide: a POISONOUS AND HAZARDOUS SUBSTANCE which should be handled by trained staff only.

Storage: 4 °C, -20 °C

Storage Comment: Store at 4°C. For long term storage store at -20°C.
Aliquot to avoid repeated freezing and thawing.

Images



Immunohistochemistry

Image 1. Immunohistochemistry (Formalin/PFA-fixed paraffin-embedded sections) of human stomach tissue with NXF1 polyclonal antibody followed by peroxidase conjugation of the secondary antibody and DAB staining.



Western Blotting

Image 2. Western blot analysis of NXF1 polyclonal antibody in K562 cell line lysates (35ug/lane). NXF1 (arrow) was detected using the purified polyclonal antibody.