

Datasheet for ABIN5584889
anti-OAT antibody (AA 33-439)[Go to Product page](#)

2 Images

Overview

Quantity:	100 µL
Target:	OAT
Binding Specificity:	AA 33-439
Reactivity:	Human
Host:	Mouse
Clonality:	Monoclonal
Conjugate:	This OAT antibody is un-conjugated
Application:	Western Blotting (WB), ELISA, Immunofluorescence (IF), Immunocytochemistry (ICC)

Product Details

Purpose:	Mouse monoclonal antibody raised against partial recombinant OAT.
Immunogen:	Recombinant protein corresponding to amino acids 33-439 of human OAT.
Clone:	AT23A2
Isotype:	IgG1
Cross-Reactivity:	Human, Mouse

Target Details

Target:	OAT
Alternative Name:	OAT (OAT Products)
Background:	Full Gene Name: ornithine aminotransferase (gyrate atrophy)

Target Details

Synonyms: DKFZp781A11155,HOGA

Gene ID: 4942

Application Details

Application Notes: Western Blot (1:250-1:500)
Immunofluorescence (1:250-1:500)
The optimal working dilution should be determined by the end user.

Restrictions: For Research Use only

Handling

Format: Liquid

Buffer: In PBS, pH 7.4 (10 % glycerol, 0.02 % sodium azide).

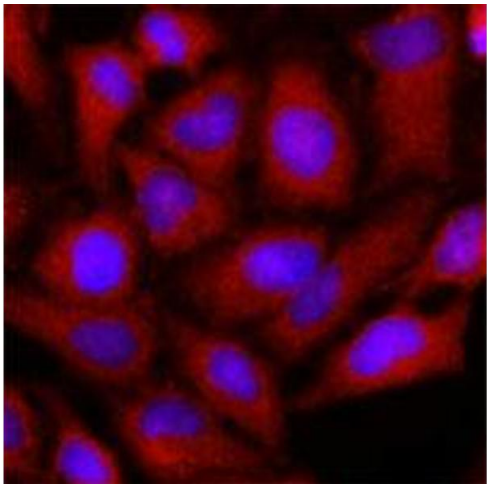
Preservative: Sodium azide

Precaution of Use: This product contains Sodium azide: a POISONOUS AND HAZARDOUS SUBSTANCE which should be handled by trained staff only.

Storage: -20 °C,-80 °C

Storage Comment: Store at 2°C to 8°C for 1 week. For long term storage, aliquot and store at -20°C to -80°C. Aliquot to avoid repeated freezing and thawing.

Images



Immunofluorescence

Image 1. Immunofluorescence of human HeLa cells stained with OAT monoclonal antibody, clone AT23A2 (1 : 500) with Texas Red (Red). Nucleus was stained by Hoechst 33342 (Blue).

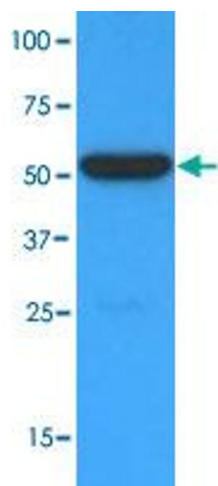
**SDS-PAGE**

Image 2. Tissue lysates of mouse liver (35 ug) were resolved by SDS-PAGE, transferred to NC membrane and probed with OAT monoclonal antibody, clone AT23A2 (1 : 1000). Proteins were visualized using a goat anti-mouse secondary antibody conjugated to HRP and an ECL detection system.