



Datasheet for ABIN5584996  
**anti-OR10R2 antibody**



[Go to Product page](#)

1 Image

### Overview

Quantity:	100 µL
Target:	OR10R2
Reactivity:	Human, Mouse
Host:	Rabbit
Clonality:	Polyclonal
Conjugate:	This OR10R2 antibody is un-conjugated
Application:	Western Blotting (WB)

### Product Details

Purpose:	Rabbit polyclonal antibody raised against synthetic peptide of OR10R2.
Immunogen:	A synthetic peptide corresponding to human OR10R2.
Specificity:	OR10R2 polyclonal antibody detects endogenous levels of OR10R2 protein.
Cross-Reactivity:	Human, Mouse

### Target Details

Target:	OR10R2
Alternative Name:	OR10R2 ( <a href="#">OR10R2 Products</a> )
Background:	Full Gene Name: olfactory receptor, family 10, subfamily R, member 2 Synonyms: OR1-8,OR10R2Q
Gene ID:	343406

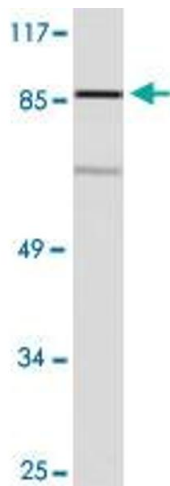
## Application Details

Application Notes:	Western Blot (1:500-1:1000) The optimal working dilution should be determined by the end user.
Restrictions:	For Research Use only

## Handling

Format:	Liquid
Concentration:	1 mg/mL
Buffer:	In PBS, pH 7.2 (0.05 % sodium azide)
Preservative:	Sodium azide
Precaution of Use:	This product contains Sodium azide: a POISONOUS AND HAZARDOUS SUBSTANCE which should be handled by trained staff only.
Storage:	4 °C,-20 °C
Storage Comment:	Store at 4°C. For long term storage store at -20°C. Aliquot to avoid repeated freezing and thawing.

## Images



### Western Blotting

**Image 1.** Western blot analysis of COLO 205 cell lysate with OR10R2 polyclonal antibody .