

Datasheet for ABIN5585001

anti-OR1Q1 antibody**1** Image[Go to Product page](#)

Overview

Quantity:	100 µL
Target:	OR1Q1
Reactivity:	Human
Host:	Rabbit
Clonality:	Polyclonal
Conjugate:	This OR1Q1 antibody is un-conjugated
Application:	Immunohistochemistry (Paraffin-embedded Sections) (IHC (p))

Product Details

Purpose:	Rabbit polyclonal antibody raised against recombinant OR1Q1.
Immunogen:	Recombinant protein corresponding to amino acids of human OR1Q1.
Sequence:	MDNSNWTSVS HFVLLGISTH PEEQI
Isotype:	IgG
Cross-Reactivity:	Human

Target Details

Target:	OR1Q1
Alternative Name:	OR1Q1 (OR1Q1 Products)
Background:	Full Gene Name: olfactory receptor, family 1, subfamily Q, member 1 Synonyms: HSTPCR106,OR1Q2,OR1Q3,OR9-25,OR9-A,OST226,OST226OR9-A,TPCR106

Target Details

Gene ID: 158131

Application Details

Application Notes: Immunohistochemistry (1:50-1:200)
The optimal working dilution should be determined by the end user.

Restrictions: For Research Use only

Handling

Format: Liquid

Buffer: In PBS, pH 7.2 (40 % glycerol, 0.02 % sodium azide)

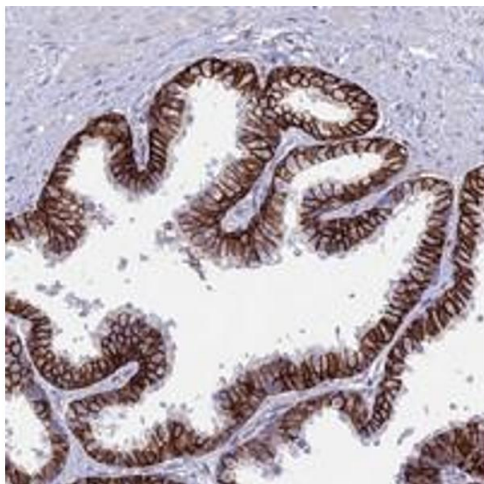
Preservative: Sodium azide

Precaution of Use: This product contains Sodium azide: a POISONOUS AND HAZARDOUS SUBSTANCE which should be handled by trained staff only.

Storage: 4 °C, -20 °C

Storage Comment: Store at 4°C. For long term storage store at -20°C.
Aliquot to avoid repeated freezing and thawing.

Images



Immunohistochemistry

Image 1. Immunohistochemical staining of human prostate with OR1Q1 polyclonal antibody shows strong membranous and cytoplasmic positivity in glandular cells at 1:50-1:200 dilution.