

Datasheet for ABIN5585005
anti-Olfactory Receptor, Family 2, Subfamily AE, Member 1 (OR2AE1) antibody

[Go to Product page](#)

1 Image

Overview

Quantity:	100 µL
Target:	Olfactory Receptor, Family 2, Subfamily AE, Member 1 (OR2AE1)
Reactivity:	Human
Host:	Rabbit
Clonality:	Polyclonal
Conjugate:	Un-conjugated
Application:	Immunohistochemistry (Paraffin-embedded Sections) (IHC (p))

Product Details

Purpose:	Rabbit polyclonal antibody raised against recombinant OR2AE1.
Immunogen:	Recombinant protein corresponding to amino acids of human OR2AE1.
Sequence:	MHFPFCGPRK VYHFYCEFPA VVKLVCGDIT VYETTV
Isotype:	IgG
Cross-Reactivity:	Human

Target Details

Target:	Olfactory Receptor, Family 2, Subfamily AE, Member 1 (OR2AE1)
Alternative Name:	OR2AE1 (OR2AE1 Products)
Background:	Full Gene Name: olfactory receptor, family 2, subfamily AE, member 1 Synonyms: OR2AE2

Target Details

Gene ID: 81392

Application Details

Application Notes: Immunohistochemistry (1:50-1:200)
The optimal working dilution should be determined by the end user.

Restrictions: For Research Use only

Handling

Format: Liquid

Buffer: In PBS, pH 7.2 (40 % glycerol, 0.02 % sodium azide)

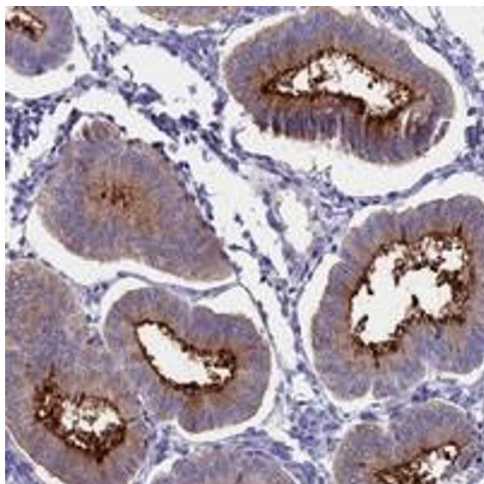
Preservative: Sodium azide

Precaution of Use: This product contains Sodium azide: a POISONOUS AND HAZARDOUS SUBSTANCE which should be handled by trained staff only.

Storage: 4 °C, -20 °C

Storage Comment: Store at 4°C. For long term storage store at -20°C.
Aliquot to avoid repeated freezing and thawing.

Images



Immunohistochemistry

Image 1. Immunohistochemical staining of human uterus, pre-menopause with OR2AE1 polyclonal antibody shows distinct membranous positivity in glandular cells at 1:50-1:200 dilution.