

Datasheet for ABIN5585013

anti-OR4A16 antibody[Go to Product page](#)**1** Image

Overview

Quantity:	100 µL
Target:	OR4A16
Reactivity:	Human, Mouse
Host:	Rabbit
Clonality:	Polyclonal
Conjugate:	This OR4A16 antibody is un-conjugated
Application:	Western Blotting (WB)

Product Details

Purpose:	Rabbit polyclonal antibody raised against synthetic peptide of OR4A16.
Immunogen:	A synthetic peptide corresponding to human OR4A16.
Specificity:	OR4A16 polyclonal antibody detects endogenous levels of OR4A16 protein.
Cross-Reactivity:	Human, Mouse

Target Details

Target:	OR4A16
Alternative Name:	OR4A16 (OR4A16 Products)
Background:	Full Gene Name: olfactory receptor, family 4, subfamily A, member 16 Synonyms: OR11-117,OR4A16Q
Gene ID:	81327

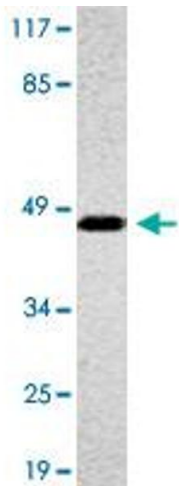
Application Details

Application Notes:	Western Blot (1:500-1:1000) The optimal working dilution should be determined by the end user.
Restrictions:	For Research Use only

Handling

Format:	Liquid
Concentration:	1 mg/mL
Buffer:	In PBS, pH 7.2 (0.05 % sodium azide)
Preservative:	Sodium azide
Precaution of Use:	This product contains Sodium azide: a POISONOUS AND HAZARDOUS SUBSTANCE which should be handled by trained staff only.
Storage:	4 °C,-20 °C
Storage Comment:	Store at 4°C. For long term storage store at -20°C. Aliquot to avoid repeated freezing and thawing.

Images



Western Blotting

Image 1. Western blot analysis of A-549 cell lysate with OR4A16 polyclonal antibody .