

Datasheet for ABIN5585018
anti-OR51E1 antibody (Internal Region)[Go to Product page](#)

1 Image

Overview

Quantity:	50 µg
Target:	OR51E1
Binding Specificity:	Internal Region
Reactivity:	Human, Monkey, Cow, Dog, Hamster, Horse, Mouse, Pig, Rabbit, Rat, Gorilla
Host:	Rabbit
Clonality:	Polyclonal
Conjugate:	This OR51E1 antibody is un-conjugated
Application:	Immunohistochemistry (Paraffin-embedded Sections) (IHC (p))

Product Details

Purpose:	Rabbit polyclonal antibody raised against synthetic peptide of OR51E1.
Immunogen:	A synthetic peptide corresponding to 16 amino acids from internal region of human OR51E1.
Specificity:	BLAST analysis of the peptide immunogen showed no homology with other human proteins, except OR51B5 (69 %).
Cross-Reactivity:	Cow, Dog, Gorilla, Hamster, Horse, Human, Monkey, Mouse, Pig, Rabbit, Rat
Cross-Reactivity (Details):	BLAST analysis of the peptide immunogen showed no homology with other human proteins, except OR51B5 (69 %).

Target Details

Target:	OR51E1
---------	--------

Target Details

Alternative Name:	OR51E1 (OR51E1 Products)
Background:	Full Gene Name: olfactory receptor, family 51, subfamily E, member 1 Synonyms: D-GPCR,FLJ13581,GPR136,GPR164,MGC24137,OR51E1P,OR52A3P,POGR,PSGR2
Gene ID:	143503

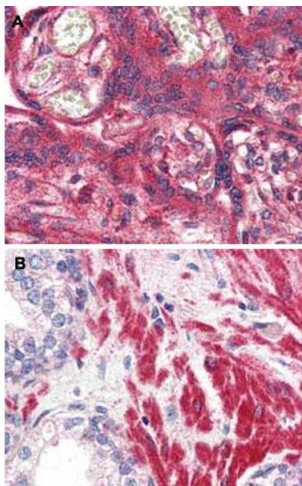
Application Details

Application Notes:	Immunohistochemistry (Formalin/PFA-fixed paraffin-embedded sections) (10 µg/mL) The optimal working dilution should be determined by the end user.
Restrictions:	For Research Use only

Handling

Format:	Liquid
Buffer:	In PBS (0.09 % sodium azide)
Preservative:	Sodium azide
Precaution of Use:	This product contains Sodium azide: a POISONOUS AND HAZARDOUS SUBSTANCE which should be handled by trained staff only.
Storage:	4 °C,-80 °C
Storage Comment:	Store at 4°C. For long term storage store at -80°C. Aliquot to avoid repeated freezing and thawing.

Images



Immunohistochemistry

Image 1. Immunohistochemical (Formalin/PFA-fixed paraffin-embedded sections) staining in human placenta (A) and human prostate (B) with OR51E1 polyclonal antibody . Immunohistochemistry of formalin-fixed, paraffin-embedded tissue after heat-induced antigen retrieval.