

Datasheet for ABIN5585033

anti-OR6P1 antibody**2** Images[Go to Product page](#)

Overview

Quantity:	100 µL
Target:	OR6P1
Reactivity:	Human, Mouse
Host:	Rabbit
Clonality:	Polyclonal
Conjugate:	This OR6P1 antibody is un-conjugated
Application:	Western Blotting (WB), Immunohistochemistry (Paraffin-embedded Sections) (IHC (p))

Product Details

Purpose:	Rabbit polyclonal antibody raised against synthetic peptide of OR6P1.
Immunogen:	A synthetic peptide corresponding to human OR6P1.
Specificity:	OR6P1 polyclonal antibody detects endogenous levels of OR6P1 protein.
Cross-Reactivity:	Human, Mouse

Target Details

Target:	OR6P1
Alternative Name:	OR6P1 (OR6P1 Products)
Background:	Full Gene Name: olfactory receptor, family 6, subfamily P, member 1
Gene ID:	128366

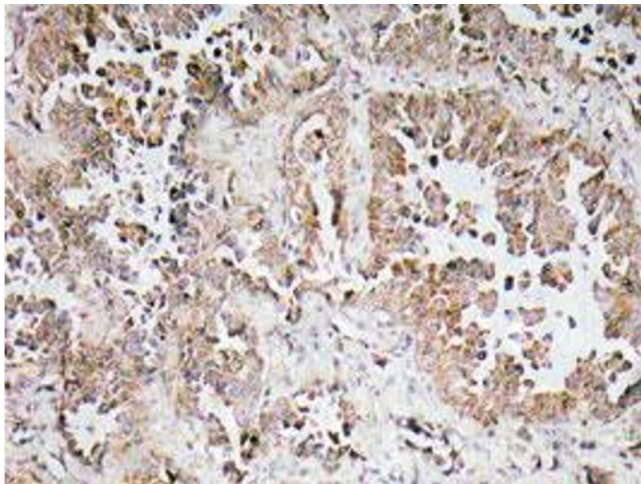
Application Details

Application Notes:	Western Blot (1:500-1:1000) Immunohistochemistry (1:50-1:200) The optimal working dilution should be determined by the end user.
Restrictions:	For Research Use only

Handling

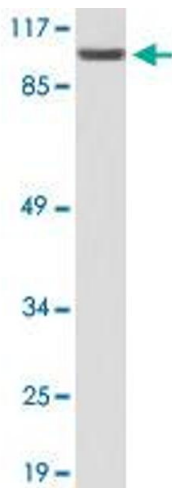
Format:	Liquid
Concentration:	1 mg/mL
Buffer:	In PBS, pH 7.2 (0.05 % sodium azide)
Preservative:	Sodium azide
Precaution of Use:	This product contains Sodium azide: a POISONOUS AND HAZARDOUS SUBSTANCE which should be handled by trained staff only.
Storage:	4 °C,-20 °C
Storage Comment:	Store at 4°C. For long term storage store at -20°C. Aliquot to avoid repeated freezing and thawing.

Images



Immunohistochemistry

Image 1. Immunohistochemical analysis of paraffin-embedded human lung cancer tissue using OR6P1 polyclonal antibody .



Western Blotting

Image 2. Western blot analysis of COLO 205 cell lysate with OR6P1 polyclonal antibody .