

Datasheet for ABIN5585034

anti-OR6P1 antibody[Go to Product page](#)**1** Image

Overview

Quantity:	100 µL
Target:	OR6P1
Reactivity:	Human
Host:	Rabbit
Clonality:	Polyclonal
Conjugate:	This OR6P1 antibody is un-conjugated
Application:	Immunohistochemistry (Paraffin-embedded Sections) (IHC (p))

Product Details

Purpose:	Rabbit polyclonal antibody raised against recombinant OR6P1.
Immunogen:	Recombinant protein corresponding to amino acids of human OR6P1.
Sequence:	EVKEAFRKTVMGRCHYPRDV Q
Isotype:	IgG
Cross-Reactivity:	Human

Target Details

Target:	OR6P1
Alternative Name:	OR6P1 (OR6P1 Products)
Background:	Full Gene Name: olfactory receptor, family 6, subfamily P, member 1
Gene ID:	128366

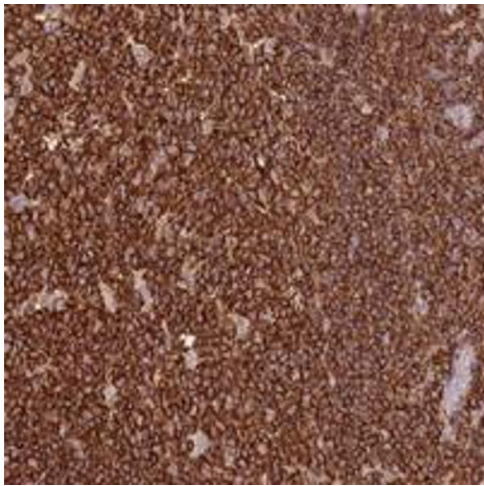
Application Details

Application Notes:	Immunohistochemistry (1:20-1:50) The optimal working dilution should be determined by the end user.
Restrictions:	For Research Use only

Handling

Format:	Liquid
Buffer:	In PBS, pH 7.2 (40 % glycerol, 0.02 % sodium azide)
Preservative:	Sodium azide
Precaution of Use:	This product contains Sodium azide: a POISONOUS AND HAZARDOUS SUBSTANCE which should be handled by trained staff only.
Storage:	4 °C,-20 °C
Storage Comment:	Store at 4°C. For long term storage store at -20°C. Aliquot to avoid repeated freezing and thawing.

Images



Immunohistochemistry

Image 1. Immunohistochemical staining of human tonsil with OR6P1 polyclonal antibody shows strong cytoplasmic positivity in germinal and non-germinal center cells at 1:20-1:50 dilution.