



Datasheet for ABIN5585060  
**anti-OS11G0163600 antibody**



[Go to Product page](#)

1 Image

### Overview

Quantity:	100 µL
Target:	OS11G0163600
Reactivity:	Oryza sativa
Host:	Rabbit
Clonality:	Polyclonal
Conjugate:	This OS11G0163600 antibody is un-conjugated
Application:	Western Blotting (WB)

### Product Details

Purpose:	Rabbit polyclonal antibody raised against synthetic peptide of Os11g0163600.
Immunogen:	A synthetic peptide corresponding to <i>Oryza sativa</i> Os11g0163600.
Specificity:	It recognizes HSP in rice tissue lysate.
Cross-Reactivity:	Oryza sativa

### Target Details

Target:	OS11G0163600
Alternative Name:	Os11g0163600 ( <a href="#">OS11G0163600 Products</a> )
Background:	Full Gene Name: Os11g0163600
Gene ID:	4349867

## Application Details

Application Notes: Western blot (1:1000)  
The optimal working dilution should be determined by the end user.

Restrictions: For Research Use only

## Handling

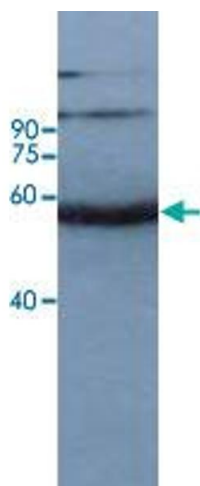
Format: Liquid

Buffer: In serum

Storage: 4 °C, -20 °C

Storage Comment: Store at 4°C. For long term storage store at -20°C.  
Aliquot to avoid repeated freezing and thawing.

## Images



### Western Blotting

**Image 1.** Western blot analysis of rice leaf tissue at seeding stage with Os11g0163600 polyclonal antibody at 1:10000 dilution.