

Datasheet for ABIN5585141
anti-P2RY12 antibody (Cytoplasmic Domain)[Go to Product page](#)

1 Image

Overview

Quantity:	50 µg
Target:	P2RY12
Binding Specificity:	Cytoplasmic Domain
Reactivity:	Human, Dog, Monkey, Horse, Rabbit, Gorilla
Host:	Rabbit
Clonality:	Polyclonal
Conjugate:	This P2RY12 antibody is un-conjugated
Application:	Immunohistochemistry (Paraffin-embedded Sections) (IHC (p))

Product Details

Purpose:	Rabbit polyclonal antibody raised against synthetic peptide of P2RY12.
Immunogen:	A synthetic peptide corresponding to 16 amino acids at cytoplasmic domain of human P2RY12.
Specificity:	BLAST analysis of the peptide immunogen showed no homology with other human proteins, except CACNA1F (56 %).
Cross-Reactivity:	Dog, Gorilla, Horse, Human, Monkey, Rabbit
Cross-Reactivity (Details):	BLAST analysis of the peptide immunogen showed no homology with other human proteins, except CACNA1F (56 %).

Target Details

Target:	P2RY12
---------	--------

Target Details

Alternative Name:	P2RY12 (P2RY12 Products)
Background:	Full Gene Name: purinergic receptor P2Y, G-protein coupled, 12 Synonyms: ADPG-R,HORK3,P2T(AC),P2Y(AC),P2Y(ADP),P2Y(cyc),P2Y12,SP1999
Gene ID:	64805

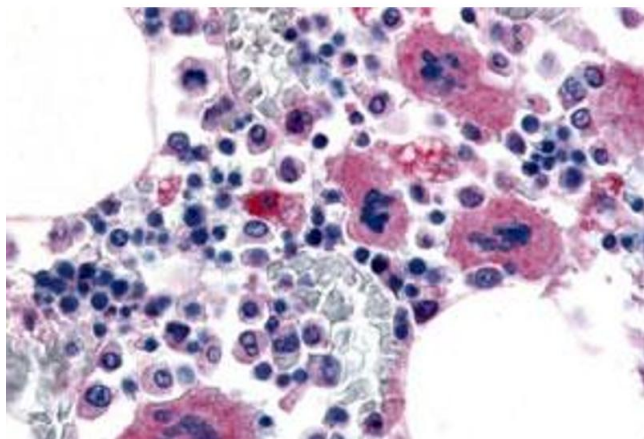
Application Details

Application Notes:	Immunohistochemistry (Formalin/PFA-fixed paraffin-embedded sections) (10 µg/mL) The optimal working dilution should be determined by the end user.
Restrictions:	For Research Use only

Handling

Format:	Liquid
Buffer:	In PBS (0.09 % sodium azide)
Preservative:	Sodium azide
Precaution of Use:	This product contains Sodium azide: a POISONOUS AND HAZARDOUS SUBSTANCE which should be handled by trained staff only.
Storage:	4 °C,-80 °C
Storage Comment:	Store at 4°C. For long term storage store at -80°C. Aliquot to avoid repeated freezing and thawing.

Images



Immunohistochemistry

Image 1. Immunohistochemical staining of human bone marrow, megakaryocytes with P2RY12 polyclonal antibody . Immunohistochemistry of formalin-fixed, paraffin-embedded tissue after heat-induced antigen retrieval.