

Datasheet for ABIN5585143
anti-P2RY12 antibody (AA 320-342)[Go to Product page](#)

1 Image

Overview

Quantity:	100 µg
Target:	P2RY12
Binding Specificity:	AA 320-342
Reactivity:	Human, Monkey
Host:	Rabbit
Clonality:	Polyclonal
Conjugate:	This P2RY12 antibody is un-conjugated
Application:	Western Blotting (WB), ELISA

Product Details

Purpose:	Rabbit polyclonal antibody raised against synthetic peptide of P2RY12.
Immunogen:	A synthetic peptide corresponding to amino acids 320-342 at C-terminus of human P2RY12.
Cross-Reactivity:	Human, Monkey

Target Details

Target:	P2RY12
Alternative Name:	P2RY12 (P2RY12 Products)
Background:	Full Gene Name: purinergic receptor P2Y, G-protein coupled, 12 Synonyms: ADPG-R,HORK3,P2T(AC),P2Y(AC),P2Y(ADP),P2Y(cyc),P2Y12,SP1999
Gene ID:	64805

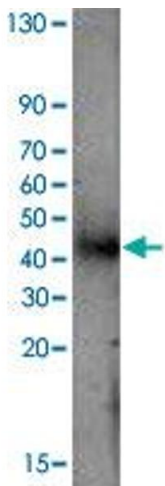
Application Details

Application Notes:	Western Blot (1:500) The optimal working dilution should be determined by the end user.
Restrictions:	For Research Use only

Handling

Format:	Liquid
Concentration:	Lot specific
Buffer:	In Tris-glycine buffer, pH 7.4 (stabilizing proteins, cryogenic stabilizers, glycerol, 0.02 % sodium azide)
Preservative:	Sodium azide
Precaution of Use:	This product contains Sodium azide: a POISONOUS AND HAZARDOUS SUBSTANCE which should be handled by trained staff only.
Storage:	-20 °C
Storage Comment:	Store at -20°C Aliquot to avoid repeated freezing and thawing.

Images



Western Blotting

Image 1. Western blot analysis of recombinant P2RY12 protein using P2RY12 polyclonal antibody .