

Datasheet for ABIN5585144
**anti-Purinergic Receptor P2Y, G-Protein Coupled, 13 (P2RY13)
(3rd Cytoplasmic Domain) antibody**

[Go to Product page](#)

1 Image

Overview

| | |
|----------------------|---|
| Quantity: | 50 µg |
| Target: | Purinergic Receptor P2Y, G-Protein Coupled, 13 (P2RY13) |
| Binding Specificity: | 3rd Cytoplasmic Domain |
| Reactivity: | Human, Gorilla |
| Host: | Rabbit |
| Clonality: | Polyclonal |
| Conjugate: | Un-conjugated |
| Application: | Immunohistochemistry (Paraffin-embedded Sections) (IHC (p)) |

Product Details

| | |
|-----------------------------|---|
| Purpose: | Rabbit polyclonal antibody raised against synthetic peptide of P2RY13. |
| Immunogen: | A synthetic peptide corresponding to 16 amino acids at 3rd cytoplasmic domain of human P2RY13. |
| Specificity: | BLAST analysis of the peptide immunogen showed no homology with other human proteins, except PRPF4B (50 %). |
| Cross-Reactivity: | Gorilla, Human |
| Cross-Reactivity (Details): | BLAST analysis of the peptide immunogen showed no homology with other human proteins, except PRPF4B (50 %). |

Target Details

| | |
|---------|---|
| Target: | Purinergic Receptor P2Y, G-Protein Coupled, 13 (P2RY13) |
|---------|---|

Target Details

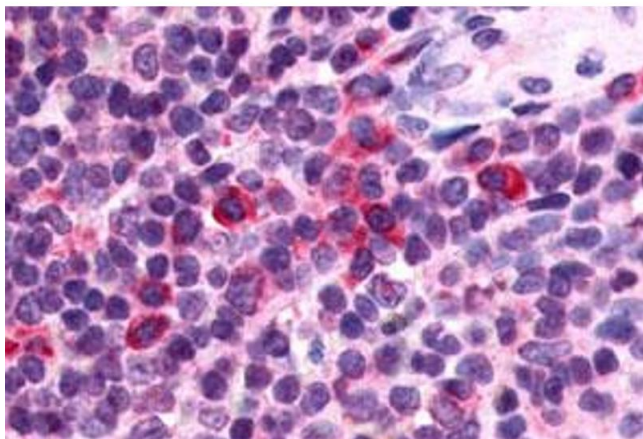
| | |
|-------------------|--|
| Alternative Name: | P2RY13 (P2RY13 Products) |
| Background: | Full Gene Name: purinergic receptor P2Y, G-protein coupled, 13 Synonyms: FKSG77,GPCR1,GPR86,GPR94,P2Y13,SP174 |
| Gene ID: | 53829 |
| Pathways: | cAMP Metabolic Process |

Application Details

| | |
|--------------------|--|
| Application Notes: | Immunohistochemistry (Formalin/PFA-fixed paraffin-embedded sections) (20-40 µg/mL) The optimal working dilution should be determined by the end user. |
| Restrictions: | For Research Use only |

Handling

| | |
|--------------------|--|
| Format: | Liquid |
| Buffer: | In PBS (0.09 % sodium azide) |
| Preservative: | Sodium azide |
| Precaution of Use: | This product contains Sodium azide: a POISONOUS AND HAZARDOUS SUBSTANCE which should be handled by trained staff only. |
| Storage: | 4 °C,-80 °C |
| Storage Comment: | Store at 4°C. For long term storage store at -80°C. Aliquot to avoid repeated freezing and thawing. |



Immunohistochemistry

Image 1. Immunohistochemical (Formalin/PFA-fixed paraffin-embedded sections) staining in human spleen with P2RY13 polyclonal antibody . Immunohistochemistry of formalin-fixed, paraffin-embedded tissue after heat-induced antigen retrieval.