

Datasheet for ABIN5585147
**anti-Purinergic Receptor P2Y, G-Protein Coupled, 13 (P2RY13)
(Extracellular Domain) antibody**

[Go to Product page](#)

1 Image

Overview

Quantity:	50 µg
Target:	Purinergic Receptor P2Y, G-Protein Coupled, 13 (P2RY13)
Binding Specificity:	Extracellular Domain
Reactivity:	Human, Gorilla
Host:	Rabbit
Clonality:	Polyclonal
Conjugate:	Un-conjugated
Application:	Immunohistochemistry (Paraffin-embedded Sections) (IHC (p))

Product Details

Purpose:	Rabbit polyclonal antibody raised against synthetic peptide of P2RY13.
Immunogen:	A synthetic peptide corresponding to 15 amino acids at N-terminal extracellular domain of human P2RY13.
Specificity:	BLAST analysis of the peptide immunogen showed no homology with other human proteins.
Cross-Reactivity:	Gorilla, Human
Cross-Reactivity (Details):	BLAST analysis of the peptide immunogen showed no homology with other human proteins.

Target Details

Target:	Purinergic Receptor P2Y, G-Protein Coupled, 13 (P2RY13)
Alternative Name:	P2RY13 (P2RY13 Products)

Target Details

Background: Full Gene Name: purinergic receptor P2Y, G-protein coupled, 13
Synonyms: FKSG77,GPCR1,GPR86,GPR94,P2Y13,SP174

Gene ID: 53829

Pathways: [cAMP Metabolic Process](#)

Application Details

Application Notes: Immunohistochemistry (Formalin/PFA-fixed paraffin-embedded sections) (11-22 µg/mL)
The optimal working dilution should be determined by the end user.

Restrictions: For Research Use only

Handling

Format: Liquid

Buffer: In PBS (0.09 % sodium azide)

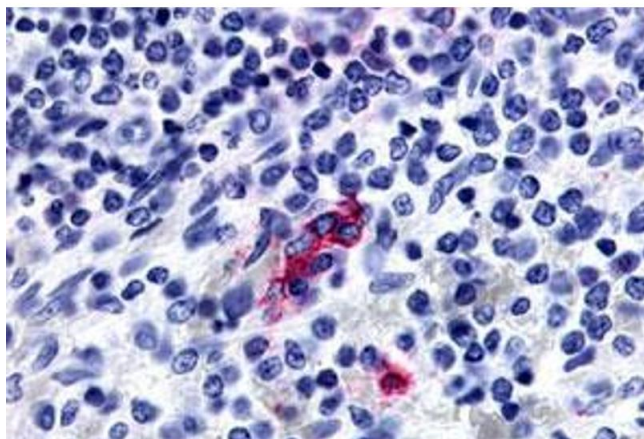
Preservative: Sodium azide

Precaution of Use: This product contains Sodium azide: a POISONOUS AND HAZARDOUS SUBSTANCE which should be handled by trained staff only.

Storage: 4 °C,-80 °C

Storage Comment: Store at 4°C. For long term storage store at -80°C.
Aliquot to avoid repeated freezing and thawing.

Images



Immunohistochemistry

Image 1. Immunohistochemical (Formalin/PFA-fixed paraffin-embedded sections) staining in human spleen with P2RY13 polyclonal antibody . Immunohistochemistry of formalin-fixed, paraffin-embedded tissue after heat-induced antigen retrieval.