

Datasheet for ABIN5585148
**anti-Purinergic Receptor P2Y, G-Protein Coupled, 13 (P2RY13)
(3rd Extracellular Domain) antibody**

[Go to Product page](#)

1 Image

Overview

| | |
|----------------------|---|
| Quantity: | 50 µg |
| Target: | Purinergic Receptor P2Y, G-Protein Coupled, 13 (P2RY13) |
| Binding Specificity: | 3rd Extracellular Domain |
| Reactivity: | Human, Gorilla |
| Host: | Rabbit |
| Clonality: | Polyclonal |
| Conjugate: | Un-conjugated |
| Application: | Immunohistochemistry (Paraffin-embedded Sections) (IHC (p)) |

Product Details

| | |
|-----------------------------|--|
| Purpose: | Rabbit polyclonal antibody raised against synthetic peptide of P2RY13. |
| Immunogen: | A synthetic peptide corresponding to 17 amino acids from 3rd extracellular domain of human P2RY13. |
| Specificity: | BLAST analysis of the peptide immunogen showed no homology with other human proteins. |
| Cross-Reactivity: | Gorilla, Human |
| Cross-Reactivity (Details): | BLAST analysis of the peptide immunogen showed no homology with other human proteins. |

Target Details

| | |
|-------------------|---|
| Target: | Purinergic Receptor P2Y, G-Protein Coupled, 13 (P2RY13) |
| Alternative Name: | P2RY13 (P2RY13 Products) |

Target Details

Background: Full Gene Name: purinergic receptor P2Y, G-protein coupled, 13
Synonyms: FKSG77,GPCR1,GPR86,GPR94,P2Y13,SP174

Gene ID: 53829

Pathways: [cAMP Metabolic Process](#)

Application Details

Application Notes: Immunohistochemistry (Formalin/PFA-fixed paraffin-embedded sections) (16 µg/mL)
The optimal working dilution should be determined by the end user.

Restrictions: For Research Use only

Handling

Format: Liquid

Buffer: In PBS (0.09 % sodium azide)

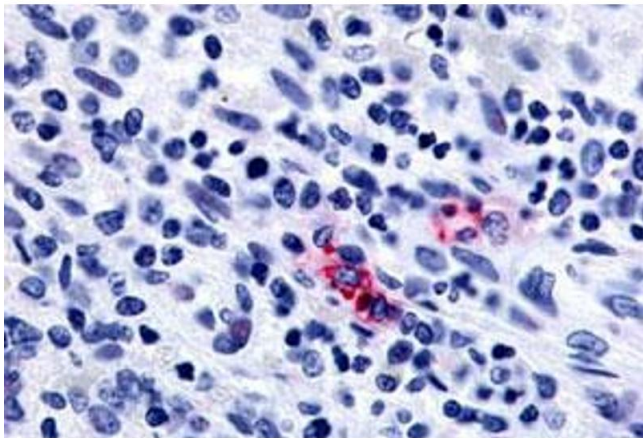
Preservative: Sodium azide

Precaution of Use: This product contains Sodium azide: a POISONOUS AND HAZARDOUS SUBSTANCE which should be handled by trained staff only.

Storage: 4 °C,-80 °C

Storage Comment: Store at 4°C. For long term storage store at -80°C.
Aliquot to avoid repeated freezing and thawing.

Images



Immunohistochemistry

Image 1. Immunohistochemical (Formalin/PFA-fixed paraffin-embedded sections) staining in human spleen with P2RY13 polyclonal antibody . Immunohistochemistry of formalin-fixed, paraffin-embedded tissue after heat-induced antigen retrieval.