

Datasheet for ABIN5585149
anti-P2RY14 antibody (C-Term)[Go to Product page](#)

2 Images

Overview

Quantity:	50 µg
Target:	P2RY14
Binding Specificity:	C-Term
Reactivity:	Human
Host:	Rabbit
Clonality:	Polyclonal
Conjugate:	This P2RY14 antibody is un-conjugated
Application:	Western Blotting (WB), Immunohistochemistry (Paraffin-embedded Sections) (IHC (p)), Immunocytochemistry (ICC)

Product Details

Purpose:	Rabbit polyclonal antibody raised against synthetic peptide of P2RY14.
Immunogen:	A synthetic peptide corresponding to 20 amino acids at C-terminus of human P2RY14.
Specificity:	BLAST analysis of the peptide immunogen showed no homology with other human proteins.
Cross-Reactivity:	Human
Cross-Reactivity (Details):	BLAST analysis of the peptide immunogen showed no homology with other human proteins.

Target Details

Target:	P2RY14
Alternative Name:	P2RY14 (P2RY14 Products)

Target Details

Background: Full Gene Name: purinergic receptor P2Y, G-protein coupled, 14
Synonyms: GPR105,KIAA0001,P2Y14

Gene ID: 9934

Application Details

Application Notes: Immunohistochemistry (Formalin/PFA-fixed paraffin-embedded sections) (4 µg/mL)
The optimal working dilution should be determined by the end user.

Restrictions: For Research Use only

Handling

Format: Liquid

Buffer: In PBS (0.09 % sodium azide)

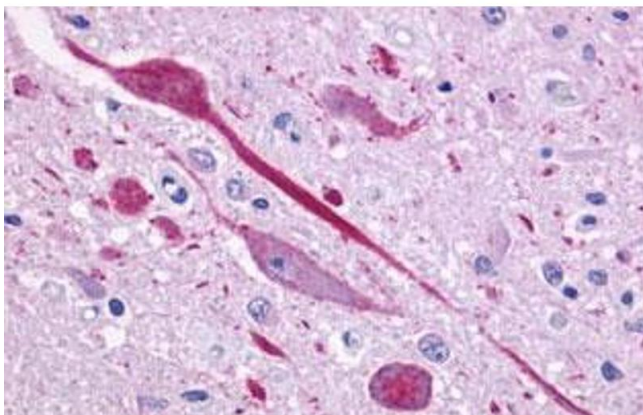
Preservative: Sodium azide

Precaution of Use: This product contains Sodium azide: a POISONOUS AND HAZARDOUS SUBSTANCE which should be handled by trained staff only.

Storage: 4 °C,-80 °C

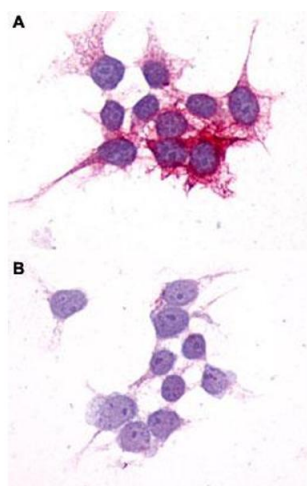
Storage Comment: Store at 4°C. For long term storage store at -80°C.
Aliquot to avoid repeated freezing and thawing.

Images



Immunohistochemistry

Image 1. Immunohistochemical (Formalin/PFA-fixed paraffin-embedded sections) staining in human brain, neurons and glia with P2RY14 polyclonal antibody . Immunohistochemistry of formalin-fixed, paraffin-embedded tissue after heat-induced antigen retrieval.



Immunocytochemistry

Image 2. Immunocytochemistry (ICC) staining of HEK293 human embryonic kidney cells transfected (A) or untransfected (B) with P2RY14. Using P2RY14 polyclonal antibody .