

Datasheet for ABIN5585152

**anti-P2RY4 antibody (2nd Extracellular Domain)****1** Image[Go to Product page](#)

## Overview

Quantity:	50 µg
Target:	P2RY4
Binding Specificity:	2nd Extracellular Domain
Reactivity:	Human
Host:	Rabbit
Clonality:	Polyclonal
Conjugate:	This P2RY4 antibody is un-conjugated
Application:	Immunohistochemistry (Paraffin-embedded Sections) (IHC (p))

## Product Details

Purpose:	Rabbit polyclonal antibody raised against synthetic peptide of P2RY4.
Immunogen:	A synthetic peptide corresponding to 15 amino acids at 2nd extracellular domain of human P2RY4.
Specificity:	BLAST analysis of the peptide immunogen showed no homology with other human proteins.
Cross-Reactivity:	Human
Cross-Reactivity (Details):	BLAST analysis of the peptide immunogen showed no homology with other human proteins.

## Target Details

Target:	P2RY4
Alternative Name:	P2RY4 ( <a href="#">P2RY4 Products</a> )

## Target Details

Background: Full Gene Name: pyrimidinergic receptor P2Y, G-protein coupled, 4  
Synonyms: NRU,P2P,P2Y4,UNR

Gene ID: 5030

## Application Details

Application Notes: Immunohistochemistry (Formalin/PFA-fixed paraffin-embedded sections) (6 µg/mL)  
The optimal working dilution should be determined by the end user.

Restrictions: For Research Use only

## Handling

Format: Liquid

Buffer: In PBS (0.09 % sodium azide)

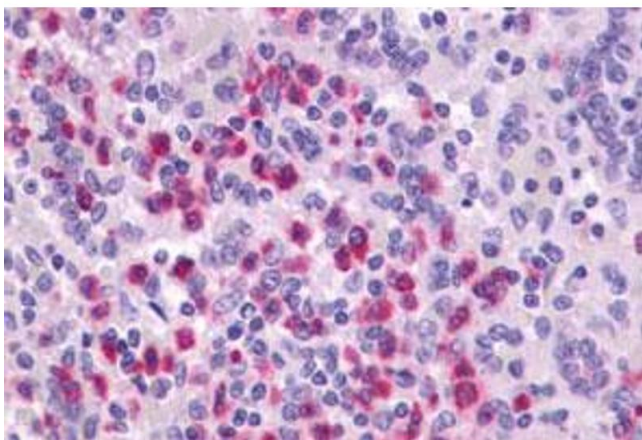
Preservative: Sodium azide

Precaution of Use: This product contains Sodium azide: a POISONOUS AND HAZARDOUS SUBSTANCE which should be handled by trained staff only.

Storage: 4 °C,-80 °C

Storage Comment: Store at 4°C. For long term storage store at -80°C.  
Aliquot to avoid repeated freezing and thawing.

## Images



### Immunohistochemistry

**Image 1.** Immunohistochemical (Formalin/PFA-fixed paraffin-embedded sections) staining in human spleen with P2RY4 polyclonal antibody . Immunohistochemistry of formalin-fixed, paraffin-embedded tissue after heat-induced antigen retrieval.