

Datasheet for ABIN5585156  
**anti-P2RY6 antibody (C-Term)**[Go to Product page](#)

## 2 Images

## Overview

Quantity:	50 µg
Target:	P2RY6
Binding Specificity:	C-Term
Reactivity:	Human, Monkey, Gorilla, Orang-Utan
Host:	Rabbit
Clonality:	Polyclonal
Conjugate:	This P2RY6 antibody is un-conjugated
Application:	Immunocytochemistry (ICC), Immunohistochemistry (Paraffin-embedded Sections) (IHC (p))

## Product Details

Purpose:	Rabbit polyclonal antibody raised against synthetic peptide of P2RY6.
Immunogen:	A synthetic peptide corresponding to 17 amino acids at C-terminus of human P2RY6.
Specificity:	BLAST analysis of the peptide immunogen showed no homology with other human proteins, except HTT (59 %).
Cross-Reactivity:	Gorilla, Human, Monkey, Orang-Utan
Cross-Reactivity (Details):	BLAST analysis of the peptide immunogen showed no homology with other human proteins, except HTT (59 %).

## Target Details

Target:	P2RY6
---------	-------

### Target Details

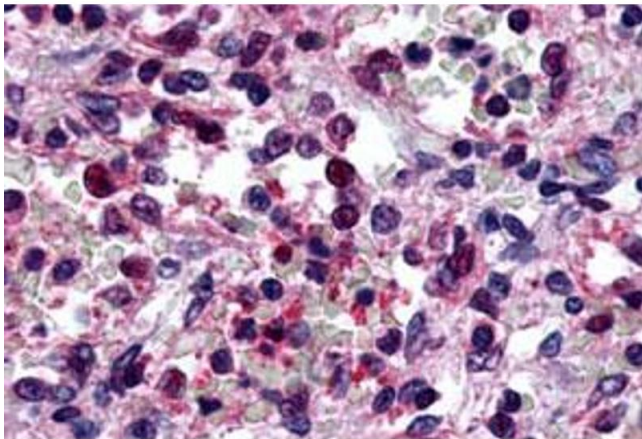
Alternative Name:	P2RY6 ( <a href="#">P2RY6 Products</a> )
Background:	Full Gene Name: pyrimidinergic receptor P2Y, G-protein coupled, 6 Synonyms: MGC15335,P2Y6
Gene ID:	5031
Pathways:	<a href="#">Smooth Muscle Cell Migration</a>

### Application Details

Application Notes:	Immunohistochemistry (Formalin/PFA-fixed paraffin-embedded sections) (3-16 µg/mL) The optimal working dilution should be determined by the end user.
Restrictions:	For Research Use only

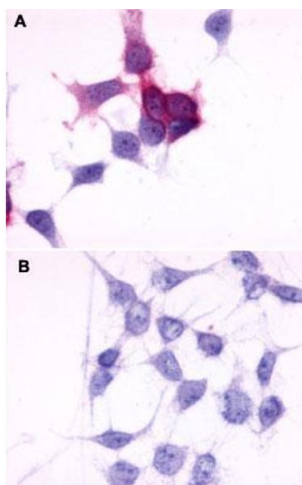
### Handling

Format:	Liquid
Buffer:	In PBS (0.09 % sodium azide)
Preservative:	Sodium azide
Precaution of Use:	This product contains Sodium azide: a POISONOUS AND HAZARDOUS SUBSTANCE which should be handled by trained staff only.
Storage:	4 °C,-80 °C
Storage Comment:	Store at 4°C. For long term storage store at -80°C. Aliquot to avoid repeated freezing and thawing.



### Immunohistochemistry

**Image 1.** Immunohistochemical (Formalin/PFA-fixed paraffin-embedded sections) staining in human spleen, red pulp with P2RY6 polyclonal antibody . Immunohistochemistry of formalin-fixed, paraffin-embedded tissue after heat-induced antigen retrieval.



### Immunocytochemistry

**Image 2.** Immunocytochemistry (ICC) staining of HEK293 human embryonic kidney cells transfected (A) or untransfected (B) with P2RY6. Using P2RY6 polyclonal antibody .