

Datasheet for ABIN5585198

**anti-PAK6 antibody****1** Image[Go to Product page](#)

## Overview

Quantity:	50 µg
Target:	PAK6
Reactivity:	Human, Mouse, Rat, Horse, Rabbit, Cow, Dog, Monkey, Chicken, Gorilla, Orang-Utan
Host:	Rabbit
Clonality:	Polyclonal
Conjugate:	This PAK6 antibody is un-conjugated
Application:	Immunohistochemistry (Paraffin-embedded Sections) (IHC (p))

## Product Details

Purpose:	Rabbit polyclonal antibody raised against synthetic peptide of PAK6.
Immunogen:	A synthetic peptide (conjugated with KLH) corresponding to human PAK6.
Specificity:	N-terminal domain of human.
Cross-Reactivity:	Chicken, Cow, Dog, Gorilla, Horse, Human, Monkey, Mouse, Orang-Utan, Rabbit, Rat

## Target Details

Target:	PAK6
Alternative Name:	PAK6 ( <a href="#">PAK6 Products</a> )
Background:	Full Gene Name: p21 protein (Cdc42/Rac)-activated kinase 6 Synonyms: PAK5
Gene ID:	56924

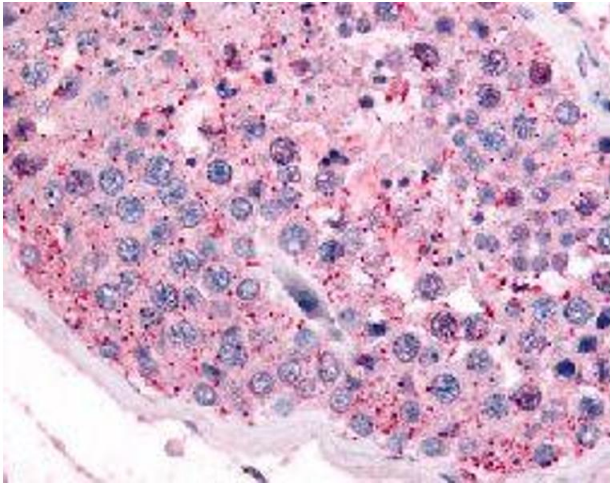
## Application Details

Application Notes:	Immunohistochemistry (Formalin/PFA-fixed paraffin-embedded sections) (10 µg/mL) The optimal working dilution should be determined by the end user.
Restrictions:	For Research Use only

## Handling

Format:	Liquid
Buffer:	In PBS (0.09 % sodium azide)
Preservative:	Sodium azide
Precaution of Use:	This product contains Sodium azide: a POISONOUS AND HAZARDOUS SUBSTANCE which should be handled by trained staff only.
Storage:	4 °C,-80 °C
Storage Comment:	Store at 4°C. For long term storage store at -80°C. Aliquot to avoid repeated freezing and thawing.

## Images



### Immunohistochemistry

**Image 1.** Immunohistochemical (Formalin/PFA-fixed paraffin-embedded sections) staining in human testis with PAK6 polyclonal antibody .