

Datasheet for ABIN5585201
anti-PAK7 antibody (Internal Region)[Go to Product page](#)

1 Image

Overview

Quantity:	50 µg
Target:	PAK7
Binding Specificity:	Internal Region
Reactivity:	Human, Gorilla, Orang-Utan
Host:	Rabbit
Clonality:	Polyclonal
Conjugate:	This PAK7 antibody is un-conjugated
Application:	ELISA, Immunohistochemistry (Paraffin-embedded Sections) (IHC (p))

Product Details

Purpose:	Rabbit polyclonal antibody raised against synthetic peptide of PAK7.
Immunogen:	A synthetic peptide corresponding to 18 amino acids at internal region of human PAK7.
Specificity:	BLAST analysis of the peptide immunogen showed no homology with other human proteins.
Cross-Reactivity:	Gorilla, Human, Orang-Utan
Cross-Reactivity (Details):	BLAST analysis of the peptide immunogen showed no homology with other human proteins.

Target Details

Target:	PAK7
Alternative Name:	PAK7 (PAK7 Products)
Background:	Full Gene Name: p21 protein (Cdc42/Rac)-activated kinase 7

Target Details

Synonyms: KIAA1264,MGC26232,PAK5

Gene ID: 57144

Application Details

Application Notes: Immunohistochemistry (Formalin/PFA-fixed paraffin-embedded sections) (5 µg/mL)
The optimal working dilution should be determined by the end user.

Restrictions: For Research Use only

Handling

Format: Liquid

Buffer: In PBS (0.09 % sodium azide)

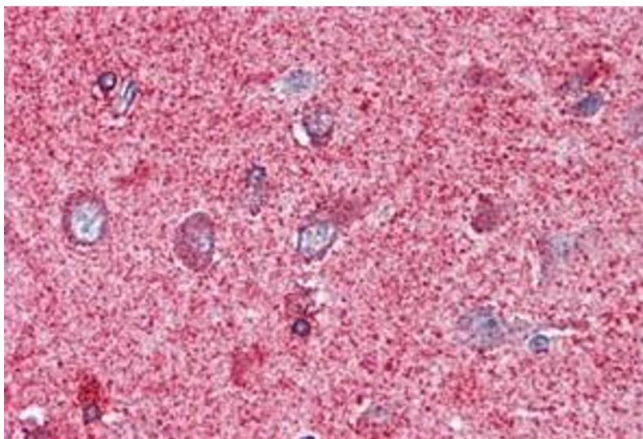
Preservative: Sodium azide

Precaution of Use: This product contains Sodium azide: a POISONOUS AND HAZARDOUS SUBSTANCE which should be handled by trained staff only.

Storage: 4 °C,-80 °C

Storage Comment: Store at 4°C. For long term storage store at -80°C.
Aliquot to avoid repeated freezing and thawing.

Images



Immunohistochemistry

Image 1. Immunohistochemical staining of formalin-fixed, paraffin-embedded human brain, cortex tissue after heat-induced antigen retrieval. Using PAK7 polyclonal antibody .