

Datasheet for ABIN5585266

**anti-PATL1 antibody****3** Images[Go to Product page](#)

## Overview

Quantity:	100 µL
Target:	PATL1
Reactivity:	Human
Host:	Rabbit
Clonality:	Polyclonal
Conjugate:	This PATL1 antibody is un-conjugated
Application:	Western Blotting (WB), Immunohistochemistry (Paraffin-embedded Sections) (IHC (p)), Immunofluorescence (IF)

## Product Details

Purpose:	Rabbit polyclonal antibody raised against recombinant PATL1.
Immunogen:	Recombinant protein corresponding to amino acids of human PATL1.
Sequence:	QHRLLHQRQ QQNRSQHRNL NGAGDRGSHR SSHQDHLRKD PYANLMLQRE KDWVSKIQMM QLQSTDPYLD DFYYQNYFEK LEKLSAAEEI QGDGPKKE
Isotype:	IgG
Cross-Reactivity:	Human

## Target Details

Target:	PATL1
Alternative Name:	PATL1 ( <a href="#">PATL1 Products</a> )

## Target Details

Background:	Full Gene Name: protein associated with topoisomerase II homolog 1 (yeast) Synonyms: FLJ36874,MGC125671,MGC125672
Gene ID:	219988
Pathways:	<a href="#">Ribonucleoprotein Complex Subunit Organization</a>

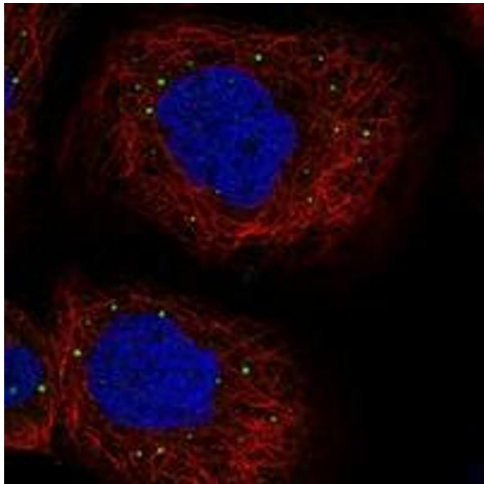
## Application Details

Application Notes:	Immunohistochemistry (1:50-1:200) Immunofluorescence (1-4 µg/mL) The optimal working dilution should be determined by the end user.
Restrictions:	For Research Use only

## Handling

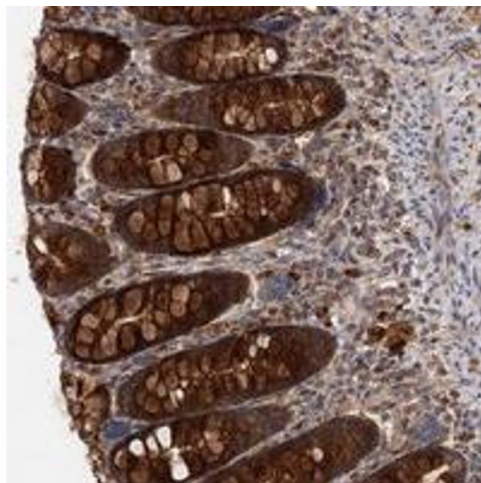
Format:	Liquid
Buffer:	In PBS, pH 7.2 (40 % glycerol, 0.02 % sodium azide)
Preservative:	Sodium azide
Precaution of Use:	This product contains Sodium azide: a POISONOUS AND HAZARDOUS SUBSTANCE which should be handled by trained staff only.
Storage:	4 °C,-20 °C
Storage Comment:	Store at 4°C. For long term storage store at -20°C. Aliquot to avoid repeated freezing and thawing.

## Images



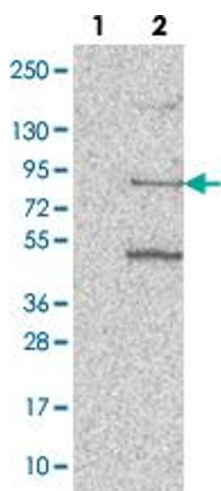
### Immunofluorescence

**Image 1.** Immunofluorescent staining of human cell line A-431 with PATL1 polyclonal antibody at 1-4 ug/mL dilution shows positivity in vesicles.



### Immunohistochemistry

**Image 2.** Immunohistochemical staining of human colon with PATL1 polyclonal antibody shows strong cytoplasmic positivity in glandular cells at 1:50-1:200 dilution.



### Western Blotting

**Image 3.** Western blot analysis of Lane 1: Negative control (vector only transfected HEK293T lysate). Lane 2: Over-expression lysate (Co-expressed with a C-terminal myc-DDK tag (~3.1 kDa) in mammalian HEK293T cells with PATL1 polyclonal antibody .