

Datasheet for ABIN5585378

anti-PDE11A antibody[Go to Product page](#)**1** Image

Overview

Quantity:	50 µg
Target:	PDE11A
Reactivity:	Human, Mouse, Rat, Cow, Horse, Rabbit, Zebrafish (Danio rerio), Pig, Monkey, Chicken, Hamster, Gorilla
Host:	Rabbit
Clonality:	Polyclonal
Conjugate:	This PDE11A antibody is un-conjugated
Application:	Immunohistochemistry (Paraffin-embedded Sections) (IHC (p))

Product Details

Purpose:	Rabbit polyclonal antibody raised against synthetic peptide of PDE11A.
Immunogen:	A synthetic peptide (conjugated with KLH) corresponding to human PDE11A.
Specificity:	Internal domain of human.
Cross-Reactivity:	Chicken, Cow, Gorilla, Hamster, Horse, Human, Monkey, Mouse, Pig, Rabbit, Rat, Zebrafish (Danio rerio)

Target Details

Target:	PDE11A
Alternative Name:	PDE11A (PDE11A Products)
Background:	Full Gene Name: phosphodiesterase 11A Synonyms: FLJ23693,MGC133355,MGC133356,PPNAD2

Target Details

Gene ID:	50940
Pathways:	cAMP Metabolic Process

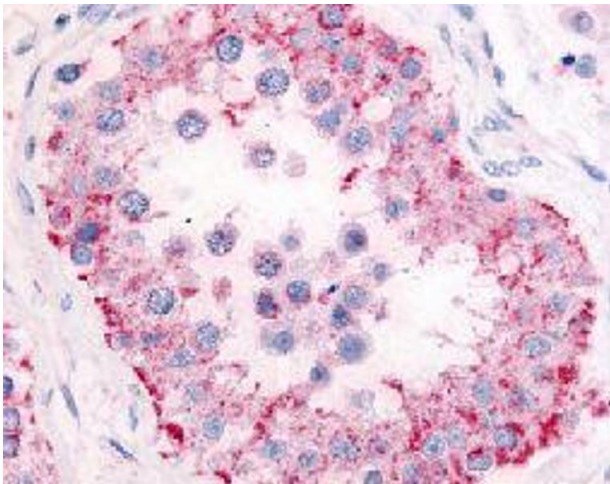
Application Details

Application Notes:	The optimal working dilution should be determined by the end user.
Restrictions:	For Research Use only

Handling

Format:	Liquid
Buffer:	In PBS (0.09 % sodium azide)
Preservative:	Sodium azide
Precaution of Use:	This product contains Sodium azide: a POISONOUS AND HAZARDOUS SUBSTANCE which should be handled by trained staff only.
Storage:	4 °C, -80 °C
Storage Comment:	Store at 4°C. For long term storage store at -80°C. Aliquot to avoid repeated freezing and thawing.

Images



Immunohistochemistry

Image 1. Immunohistochemical (Formalin/PFA-fixed paraffin-embedded sections) staining in human testis with PDE11A polyclonal antibody .