

Datasheet for ABIN5585382

anti-PDE1A antibody**1** Image[Go to Product page](#)

Overview

Quantity:	100 µg
Target:	PDE1A
Reactivity:	Human, Mouse, Rat
Host:	Rabbit
Clonality:	Polyclonal
Conjugate:	This PDE1A antibody is un-conjugated
Application:	Western Blotting (WB), Immunoprecipitation (IP)

Product Details

Purpose:	Rabbit polyclonal antibody raised against synthetic peptide of PDE1A7.
Immunogen:	A synthetic peptide corresponding to human PDE1A7.
Sequence:	MIFRRLLDTE DELC
Cross-Reactivity:	Human, Mouse, Rat

Target Details

Target:	PDE1A
Alternative Name:	PDE1A (PDE1A Products)
Background:	Full Gene Name: phosphodiesterase 1A, calmodulin-dependent Synonyms: HCAM1,HSPDE1A,MGC26303
Gene ID:	5136

Target Details

Pathways:	Neurotrophin Signaling Pathway , cAMP Metabolic Process , G-protein mediated Events , Interaction of EGFR with phospholipase C-gamma
-----------	--

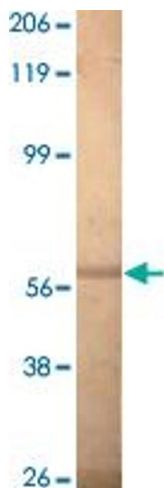
Application Details

Application Notes:	WB (1:500-1:750) Immunostain (1:200) The optimal working dilution should be determined by the end user.
Restrictions:	For Research Use only

Handling

Format:	Liquid
Concentration:	0.57 mg/mL
Buffer:	In 50 % antibody stabilization buffer contains Tris-glycine buffer, pH 7.4 (stabilizing proteins, cryogenic stabilizers, glycerol, 0.02 % sodium azide)
Preservative:	Sodium azide
Precaution of Use:	This product contains Sodium azide: a POISONOUS AND HAZARDOUS SUBSTANCE which should be handled by trained staff only.
Storage:	-20 °C
Storage Comment:	Store at -20°C Aliquot to avoid repeated freezing and thawing.

Images



Western Blotting

Image 1. Western blot analysis of recombinant PDE1A7 protein using PDE1A7 polyclonal antibody .