

Datasheet for ABIN5585386

**anti-PDE3A antibody**[Go to Product page](#)**1** Image

## Overview

Quantity:	50 µg
Target:	PDE3A
Reactivity:	Human, Rat, Mouse, Monkey, Horse
Host:	Rabbit
Clonality:	Polyclonal
Conjugate:	This PDE3A antibody is un-conjugated
Application:	Immunohistochemistry (Paraffin-embedded Sections) (IHC (p))

## Product Details

Purpose:	Rabbit polyclonal antibody raised against synthetic peptide of PDE3A.
Immunogen:	A synthetic peptide (conjugated with KLH) corresponding to human PDE3A.
Specificity:	Internal domain of human.
Cross-Reactivity:	Horse, Human, Monkey, Mouse, Rat

## Target Details

Target:	PDE3A
Alternative Name:	PDE3A ( <a href="#">PDE3A Products</a> )
Background:	Full Gene Name: phosphodiesterase 3A, cGMP-inhibited Synonyms: CGI-PDE
Gene ID:	5139

## Target Details

Pathways: [cAMP Metabolic Process](#)

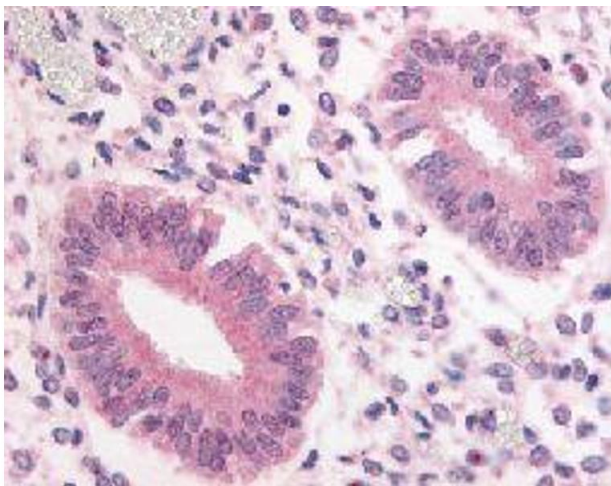
## Application Details

Application Notes:	The optimal working dilution should be determined by the end user.
Restrictions:	For Research Use only

## Handling

Format:	Liquid
Buffer:	In PBS (0.09 % sodium azide)
Preservative:	Sodium azide
Precaution of Use:	This product contains Sodium azide: a POISONOUS AND HAZARDOUS SUBSTANCE which should be handled by trained staff only.
Storage:	4 °C,-80 °C
Storage Comment:	Store at 4°C. For long term storage store at -80°C. Aliquot to avoid repeated freezing and thawing.

## Images



### Immunohistochemistry

**Image 1.** Immunohistochemical (Formalin/PFA-fixed paraffin-embedded sections) staining in human uterus with PDE3A polyclonal antibody .