

Datasheet for ABIN5585398

anti-PDE7B antibody[Go to Product page](#)**1** Image

Overview

Quantity:	50 µg
Target:	PDE7B
Reactivity:	Human, Mouse, Rat, Monkey, Gorilla
Host:	Rabbit
Clonality:	Polyclonal
Conjugate:	This PDE7B antibody is un-conjugated
Application:	Immunohistochemistry (Paraffin-embedded Sections) (IHC (p))

Product Details

Purpose:	Rabbit polyclonal antibody raised against synthetic peptide of PDE7B.
Immunogen:	A synthetic peptide (conjugated with KLH) corresponding to human PDE7B.
Specificity:	Internal domain of human.
Cross-Reactivity:	Gorilla, Human, Monkey, Mouse, Rat

Target Details

Target:	PDE7B
Alternative Name:	PDE7B (PDE7B Products)
Background:	Full Gene Name: phosphodiesterase 7B Synonyms: MGC88256,bA472E5.1
Gene ID:	27115

Target Details

Pathways: [cAMP Metabolic Process](#)

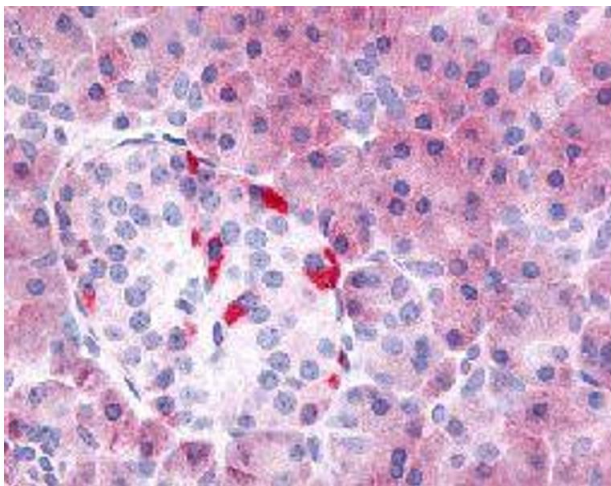
Application Details

Application Notes:	The optimal working dilution should be determined by the end user.
Restrictions:	For Research Use only

Handling

Format:	Liquid
Buffer:	In PBS (0.09 % sodium azide)
Preservative:	Sodium azide
Precaution of Use:	This product contains Sodium azide: a POISONOUS AND HAZARDOUS SUBSTANCE which should be handled by trained staff only.
Storage:	4 °C,-80 °C
Storage Comment:	Store at 4°C. For long term storage store at -80°C. Aliquot to avoid repeated freezing and thawing.

Images



Immunohistochemistry

Image 1. Immunohistochemical (Formalin/PFA-fixed paraffin-embedded sections) staining in human pancreas with PDE7B polyclonal antibody .