

Datasheet for ABIN5585569

**anti-PGBD2 antibody**[Go to Product page](#)**1** Image

## Overview

Quantity:	100 µL
Target:	PGBD2
Reactivity:	Human
Host:	Rabbit
Clonality:	Polyclonal
Conjugate:	This PGBD2 antibody is un-conjugated
Application:	Immunohistochemistry (Paraffin-embedded Sections) (IHC (p))

## Product Details

Purpose:	Rabbit polyclonal antibody raised against recombinant PGBD2.
Immunogen:	Recombinant protein corresponding to amino acids of human PGBD2.
Sequence:	DYKVDSEEEI IVCRWHDSSV VNICSNAVGI EPVRLTSRHS GAAKTRTQVH QPSLVKLYQE KVGGVGRMDQ NIAKYKVKIR GMKWYSS
Isotype:	IgG
Cross-Reactivity:	Human

## Target Details

Target:	PGBD2
Alternative Name:	PGBD2 ( <a href="#">PGBD2 Products</a> )
Background:	Full Gene Name: piggyBac transposable element derived 2

## Target Details

Gene ID: 267002

## Application Details

Application Notes: Immunohistochemistry (1:10-1:20)  
The optimal working dilution should be determined by the end user.

Restrictions: For Research Use only

## Handling

Format: Liquid

Buffer: In PBS, pH 7.2 (40 % glycerol, 0.02 % sodium azide)

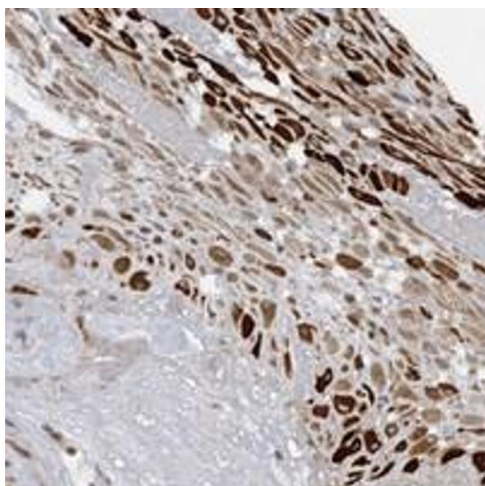
Preservative: Sodium azide

Precaution of Use: This product contains Sodium azide: a POISONOUS AND HAZARDOUS SUBSTANCE which should be handled by trained staff only.

Storage: 4 °C, -20 °C

Storage Comment: Store at 4°C. For long term storage store at -20°C.  
Aliquot to avoid repeated freezing and thawing.

## Images



### Immunohistochemistry

**Image 1.** Immunohistochemical staining of human placenta with PGBD2 polyclonal antibody shows strong positivity in decidual cells at 1:10-1:20 dilution.