



[Go to Product page](#)

Datasheet for ABIN5585610

## anti-PHF12 antibody

### 2 Images

#### Overview

Quantity:	100 µL
Target:	PHF12
Reactivity:	Human
Host:	Rabbit
Clonality:	Polyclonal
Conjugate:	This PHF12 antibody is un-conjugated
Application:	Immunohistochemistry (Paraffin-embedded Sections) (IHC (p)), Immunofluorescence (IF)

#### Product Details

Purpose:	Rabbit polyclonal antibody raised against recombinant PHF12.
Immunogen:	Recombinant protein corresponding to amino acids of human PHF12.
Sequence:	GGAVNMCYRT LYIGTGADMD VCLTNYGHCN YVSGKHACIF YDENTKHYEL LNYSEHGTTV DNLVYSCDFS EKTPTTPSS IVAKVQ
Isotype:	IgG
Cross-Reactivity:	Human

#### Target Details

Target:	PHF12
Alternative Name:	PHF12 ( <a href="#">PHF12 Products</a> )
Background:	Full Gene Name: PHD finger protein 12

## Target Details

---

Synonyms: FLJ34122,KIAA1523,MGC131914,PF1

---

Gene ID: 57649

---

## Application Details

---

Application Notes: Immunohistochemistry (1:20-1:50)  
Immunofluorescence (1-4 µg/mL)  
The optimal working dilution should be determined by the end user.

---

Restrictions: For Research Use only

---

## Handling

---

Format: Liquid

---

Buffer: In PBS, pH 7.2 (40 % glycerol, 0.02 % sodium azide)

---

Preservative: Sodium azide

---

Precaution of Use: This product contains Sodium azide: a POISONOUS AND HAZARDOUS SUBSTANCE which should be handled by trained staff only.

---

Storage: 4 °C,-20 °C

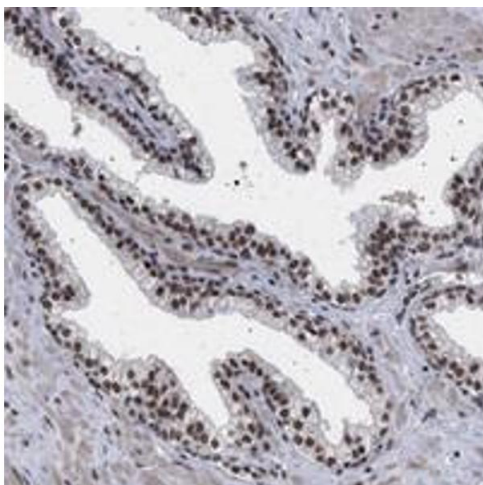
---

Storage Comment: Store at 4°C. For long term storage store at -20°C.  
Aliquot to avoid repeated freezing and thawing.

---

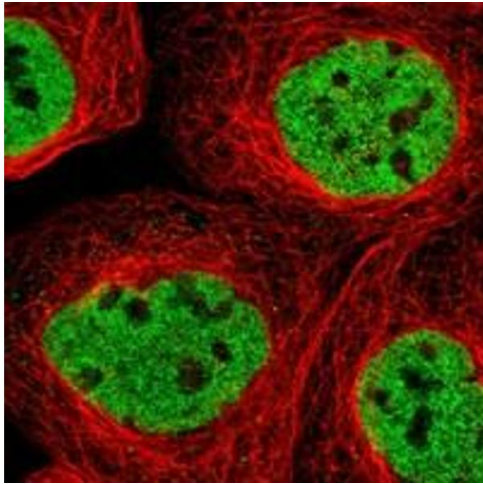
## Images

---



### Immunohistochemistry

**Image 1.** Immunohistochemical staining of human prostate with PHF12 polyclonal antibody shows strong nuclear positivity in glandular cells.



### Immunofluorescence

**Image 2.** Immunofluorescent staining of human cell line A-431 with PHF12 polyclonal antibody at 1-4 ug/mL dilution shows positivity in nuclei but not nucleoli.