

Datasheet for ABIN5585614  
**anti-PHF2 antibody (C-Term)**

## 1 Image

[Go to Product page](#)

## Overview

Quantity:	100 µg
Target:	PHF2
Binding Specificity:	C-Term
Reactivity:	Human
Host:	Mouse
Clonality:	Monoclonal
Conjugate:	This PHF2 antibody is un-conjugated
Application:	Western Blotting (WB), ELISA

## Product Details

Purpose:	Mouse monoclonal antibody raised against partial recombinant PHF2.
Immunogen:	Recombinant protein corresponding to C-terminus residues of human PHF2.
Specificity:	This antibody is specific to PHF2.
Cross-Reactivity:	Human

## Target Details

Target:	PHF2
Alternative Name:	PHF2 ( <a href="#">PHF2 Products</a> )
Background:	Full Gene Name: PHD finger protein 2 Synonyms: GRC5,JHDM1E,KIAA0662,MGC176680

Target Details

Gene ID:	5253
NCBI Accession:	<a href="#">NM_005392</a>

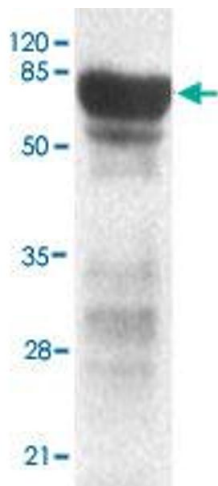
Application Details

Application Notes:	Western Blot (1:100-1:2000) ELISA (1:5000-1:20000) The optimal working dilution should be determined by the end user.
Restrictions:	For Research Use only

Handling

Format:	Liquid
Concentration:	1 mg/mL
Buffer:	In PBS, pH 7.4 (0.02 % sodium azide, 50 % glycerol)
Preservative:	Sodium azide
Precaution of Use:	This product contains Sodium azide: a POISONOUS AND HAZARDOUS SUBSTANCE which should be handled by trained staff only.
Storage:	4 °C,-20 °C
Storage Comment:	Store at 4°C for three months. For long term storage store at -20°C. Aliquot to avoid repeated freezing and thawing.

Images



**Western Blotting**

**Image 1.** Western blot analysis of PHF2 monoclonal antibody at 1 : 2000 dilution interacts with recombinant PHF2 protein with a GST tag. Predicted band size : 80 KDa. Observed band size : 80 KDa.