



[Go to Product page](#)

Datasheet for ABIN5585618

anti-PHF20 antibody

2 Images

Overview

Quantity:	100 µL
Target:	PHF20
Reactivity:	Human
Host:	Rabbit
Clonality:	Polyclonal
Conjugate:	This PHF20 antibody is un-conjugated
Application:	Immunohistochemistry (Paraffin-embedded Sections) (IHC (p)), Immunofluorescence (IF)

Product Details

Purpose:	Rabbit polyclonal antibody raised against recombinant PHF20.
Immunogen:	Recombinant protein corresponding to amino acids of human PHF20.
Sequence:	PSIAPTAVDS NSQTLQPITL ELRRRKISKG CEVPLKRPRL DKNSSQEKSK NYSENTDKDL SRRRSSRLST NGTHEILDPD LVVSDLV
Isotype:	IgG
Cross-Reactivity:	Human

Target Details

Target:	PHF20
Alternative Name:	PHF20 (PHF20 Products)
Background:	Full Gene Name: PHD finger protein 20

Target Details

Synonyms: C20orf104,FLJ33479,GLEA2,HCA58,NZF,TZP

Gene ID: 51230

Application Details

Application Notes: Immunohistochemistry (1:200-1:500)
The optimal working dilution should be determined by the end user.

Restrictions: For Research Use only

Handling

Format: Liquid

Buffer: In PBS, pH 7.2 (40 % glycerol, 0.02 % sodium azide)

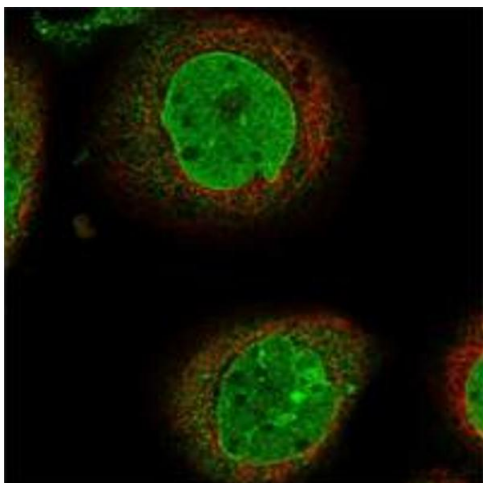
Preservative: Sodium azide

Precaution of Use: This product contains Sodium azide: a POISONOUS AND HAZARDOUS SUBSTANCE which should be handled by trained staff only.

Storage: 4 °C,-20 °C

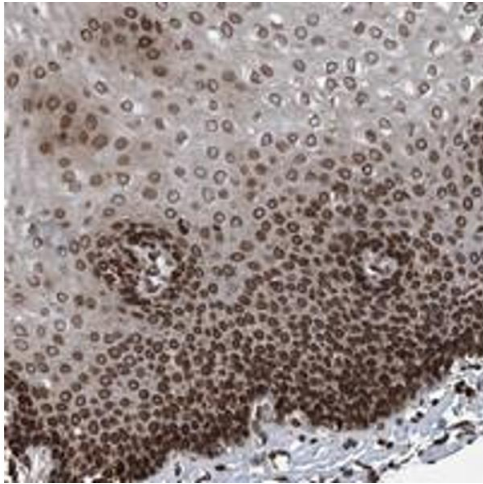
Storage Comment: Store at 4°C. For long term storage store at -20°C.
Aliquot to avoid repeated freezing and thawing.

Images



Immunofluorescence

Image 1. Immunofluorescent staining of human cell line A-431 shows positivity in nucleus but not nucleoli & nuclear membrane. Using PHF20 polyclonal antibody .



Immunohistochemistry

Image 2. Immunohistochemical staining of human esophagus with PHF20 polyclonal antibody shows strong nuclear membranous positivity in squamous epithelial cells.