

Datasheet for ABIN5585755

**anti-PLA2G3 antibody**[Go to Product page](#)**1** Image

## Overview

Quantity:	50 µg
Target:	PLA2G3
Reactivity:	Human, Gorilla
Host:	Rabbit
Clonality:	Polyclonal
Conjugate:	This PLA2G3 antibody is un-conjugated
Application:	Immunohistochemistry (Paraffin-embedded Sections) (IHC (p))

## Product Details

Purpose:	Rabbit polyclonal antibody raised against synthetic peptide of PLA2G3.
Immunogen:	A synthetic peptide (conjugated with KLH) corresponding to human PLA2G3.
Specificity:	Internal domain of human.
Cross-Reactivity:	Gorilla, Human

## Target Details

Target:	PLA2G3
Alternative Name:	PLA2G3 ( <a href="#">PLA2G3 Products</a> )
Background:	Full Gene Name: phospholipase A2, group III Synonyms: GIII-SPLA2,SPLA2III
Gene ID:	50487

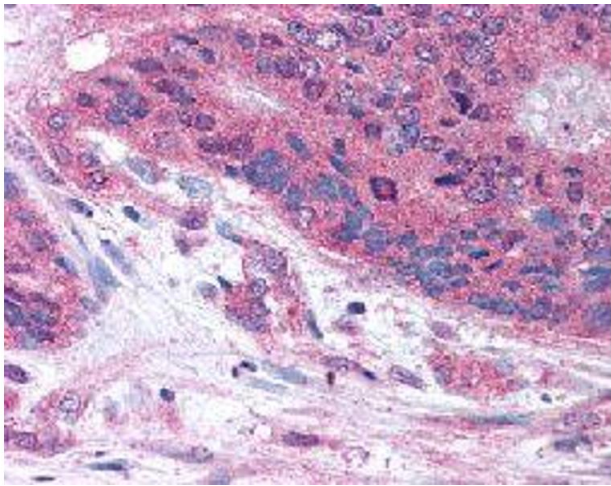
## Application Details

Application Notes:	Immunohistochemistry (Formalin/PFA-fixed paraffin-embedded sections) (10 µg/mL) The optimal working dilution should be determined by the end user.
Restrictions:	For Research Use only

## Handling

Format:	Liquid
Buffer:	In PBS (0.09 % sodium azide)
Preservative:	Sodium azide
Precaution of Use:	This product contains Sodium azide: a POISONOUS AND HAZARDOUS SUBSTANCE which should be handled by trained staff only.
Storage:	4 °C,-80 °C
Storage Comment:	Store at 4°C. For long term storage store at -80°C. Aliquot to avoid repeated freezing and thawing.

## Images



### Immunohistochemistry

**Image 1.** Immunohistochemical (Formalin/PFA-fixed paraffin-embedded sections) staining in human colon carcinoma with PLA2G3 polyclonal antibody .